

Classified Point Cloud

Deliverable 1 Summary

✓ General		
Folder:	G:\South_Texas_Lot5_Delivery_Block_4\point_cloud\tilecls	
Total # of Files:	3,788	(All Valid)
Total File Size:	1.2 TB	(1,290,845,956,022 bytes)

✓ Tile Sizes	
Median Tile Size:	1,500m x 1,500m
Minimum Tile Size:	1,500m x 966m
Maximum Tile Size:	1,500m x 1,500m
X Range:	511500.00m to 631499.99m
Y Range:	3027000.00m to 3119784.96m
Elevation Range:	-188.03m to 2180.00m

✓ LAS Version And Point Record Formats	
v1.4, Point Record Format 6	3,788 of 3,788 Tiles

✓ Spatial Reference System		
Horizontal Projection	NAD83(2011) / UTM zone 14N	3,788 of 3,788 Tiles
Horizontal Datum	NAD83 (National Spatial Reference System 2011)	3,788 of 3,788 Tiles
Horizontal Units	meter	3,788 of 3,788 Tiles
Vertical Datum	NAVD88 height	3,788 of 3,788 Tiles
Vertical Units	meter	3,788 of 3,788 Tiles
Storage Method	WKT	3,788 of 3,788 Tiles

✓ GPS Time Type	
Adjusted	3,788 of 3,788 Tiles

✓ File Source ID Equals 0	
Yes	3,788 of 3,788 Tiles

✓ VLR/EVLR Reserved Equals 0	
Yes	3,788 of 3,788 Records

✓ Unnecessary Bytes At End Of File	
No	3,788 of 3,788 Tiles

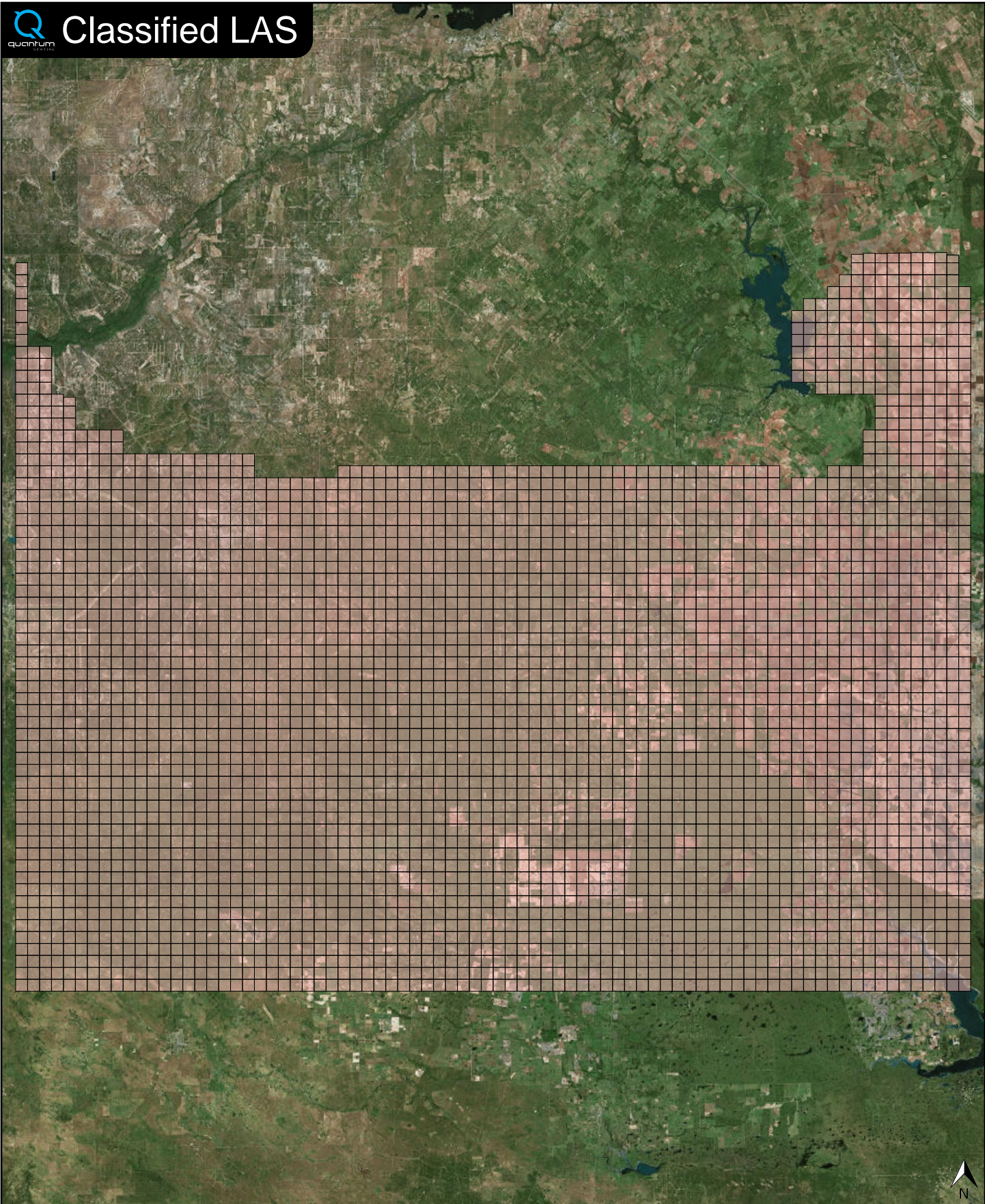
✓ Legacy Point Count Check	
Zero	3,788 of 3,788 Tiles

✓ System Identifier	
Quantum Spatial	3,788 of 3,788 Tiles

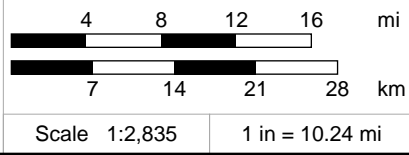
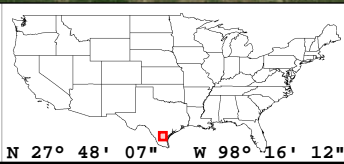
✓ Generating Software	
LiDAR Suite	3,788 of 3,788 Tiles



Classified LAS



Classified LAS Tiles (3,788)

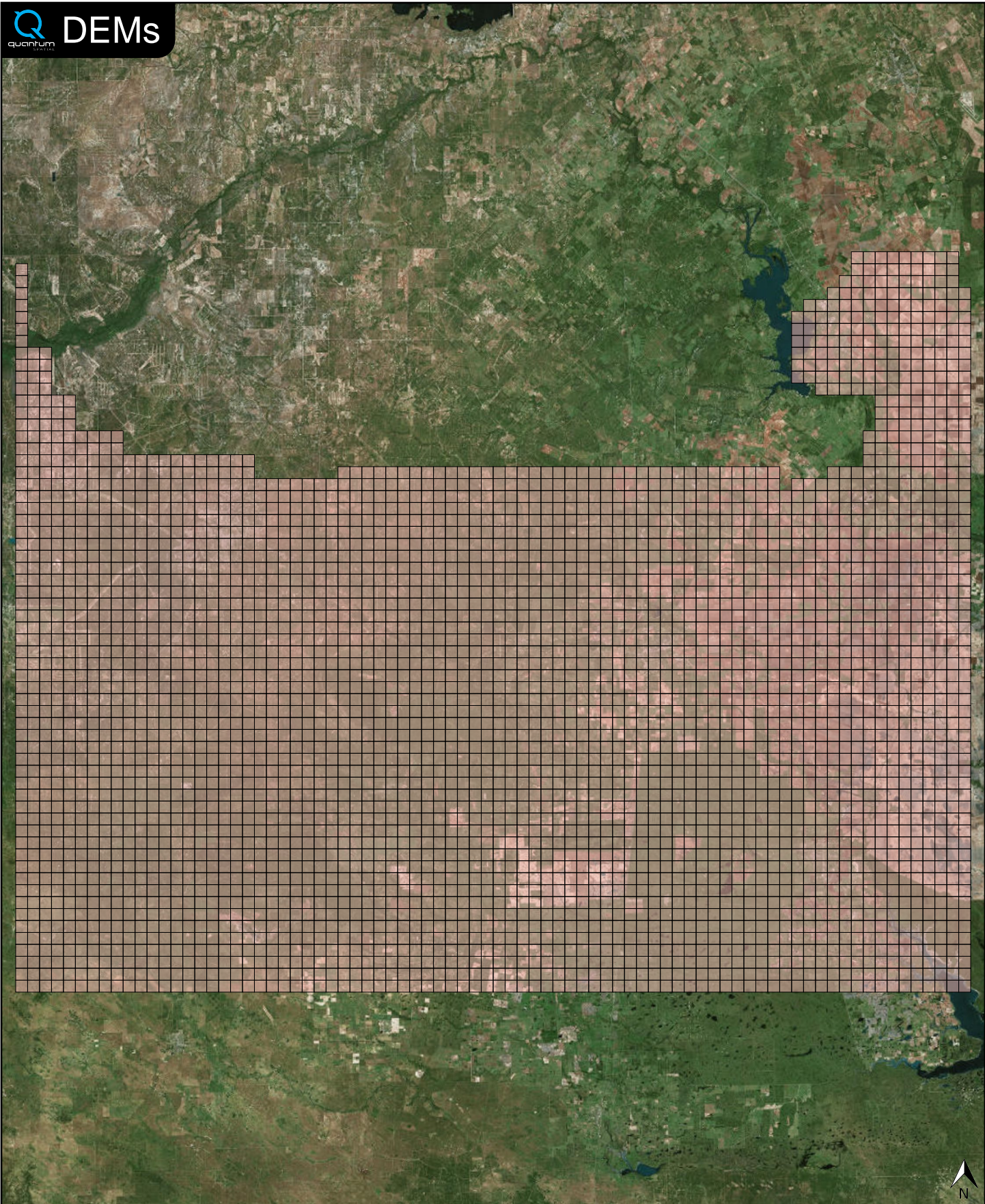


✓ General		
Folder:	G:\South_Texas_Lot5_Delivery_Block_4\bare_earth\be_rasters	
Total # of Files:	3,788	(All Valid)
Total File Size:	33.3 GB	(35,755,041,852 bytes)

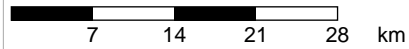
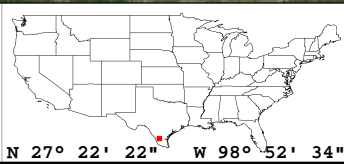
✓ Tile Sizes	
Median Tile Size:	1,500m x 1,500m
Minimum Tile Size:	1,500m x 1,500m
Maximum Tile Size:	1,500m x 1,500m
X Range:	511500.00m to 631500.00m
Y Range:	3027000.00m to 3120000.00m
Elevation Range:	0.00m to 0.00m

✓ Spatial Reference System		
Horizontal Projection	NAD_1983_2011_UTM_Zone_14N	3,788 of 3,788 Tiles
Horizontal Datum	D_NAD_1983_2011	3,788 of 3,788 Tiles
Horizontal Units	Meter	3,788 of 3,788 Tiles
Vertical Datum	NAVD88 height	3,788 of 3,788 Tiles
Vertical Units	Meter	3,788 of 3,788 Tiles

✓ Raster		
File Type:	TIF	3,788 of 3,788
Bands:	0	3,788 of 3,788
Grid Size (pixels):	1 x 1	3,788 of 3,788
Pixel Resolution:	1.00000000m x 1.00000000m	3,788 of 3,788
Pixel Type:	Unknown Pixel Type	3,788 of 3,788
Compression:	None	3,788 of 3,788
No Data Value:	NONE	3,788 of 3,788



DEMs Tiles (3,788)



Scale 1:2,835

1 in = 10.24 mi

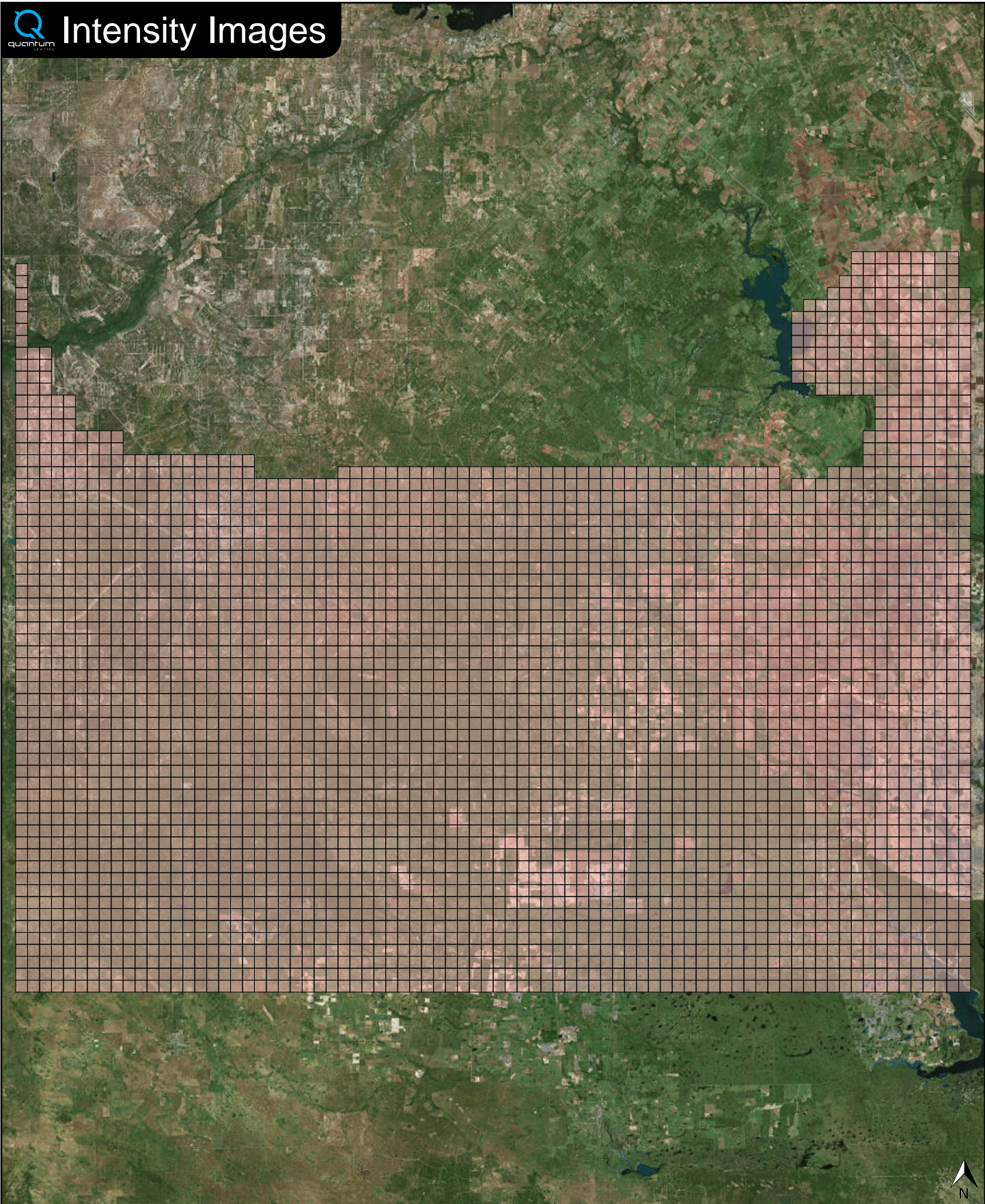


✓ General		
Folder:	G:\South_Texas_Lot5_Delivery_Block_4\other\Intensity_Images	
Total # of Files:	3,788	(All Valid)
Total File Size:	11.3 GB	(12,174,033,496 bytes)

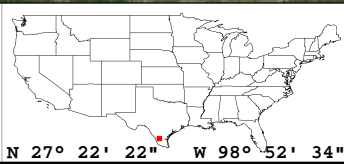
✓ Tile Sizes	
Median Tile Size:	1,500m x 1,500m
Minimum Tile Size:	1,500m x 1,500m
Maximum Tile Size:	1,500m x 1,500m
X Range:	511500.00m to 631500.00m
Y Range:	3027000.00m to 3120000.00m

✓ Spatial Reference System		
Horizontal Projection	NAD_1983_2011_UTM_Zone_14N	3,788 of 3,788 Tiles
Horizontal Datum	NAD_1983_2011	3,788 of 3,788 Tiles
Horizontal Units	Meter	3,788 of 3,788 Tiles
Vertical Datum	NAVD88 height	3,788 of 3,788 Tiles
Vertical Units	Meter	3,788 of 3,788 Tiles

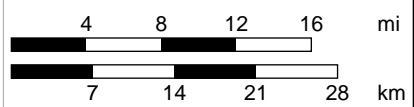
✓ Raster		
File Type:	TIF	3,788 of 3,788
Bands:	1	3,788 of 3,788
Grid Size (pixels):	1500 x 1500	3,788 of 3,788
Pixel Resolution:	1.00000000m x 1.00000000m	3,788 of 3,788
Pixel Type:	8-bit Unsigned Integer (MINISBLACK)	3,788 of 3,788
Compression:	NONE	3,788 of 3,788
No Data Value:	NONE	3,788 of 3,788



Intensity Images Tiles (3,788)



N 27° 22' 22" W 98° 52' 34"



Scale 1:2,835 1 in = 10.24 mi

