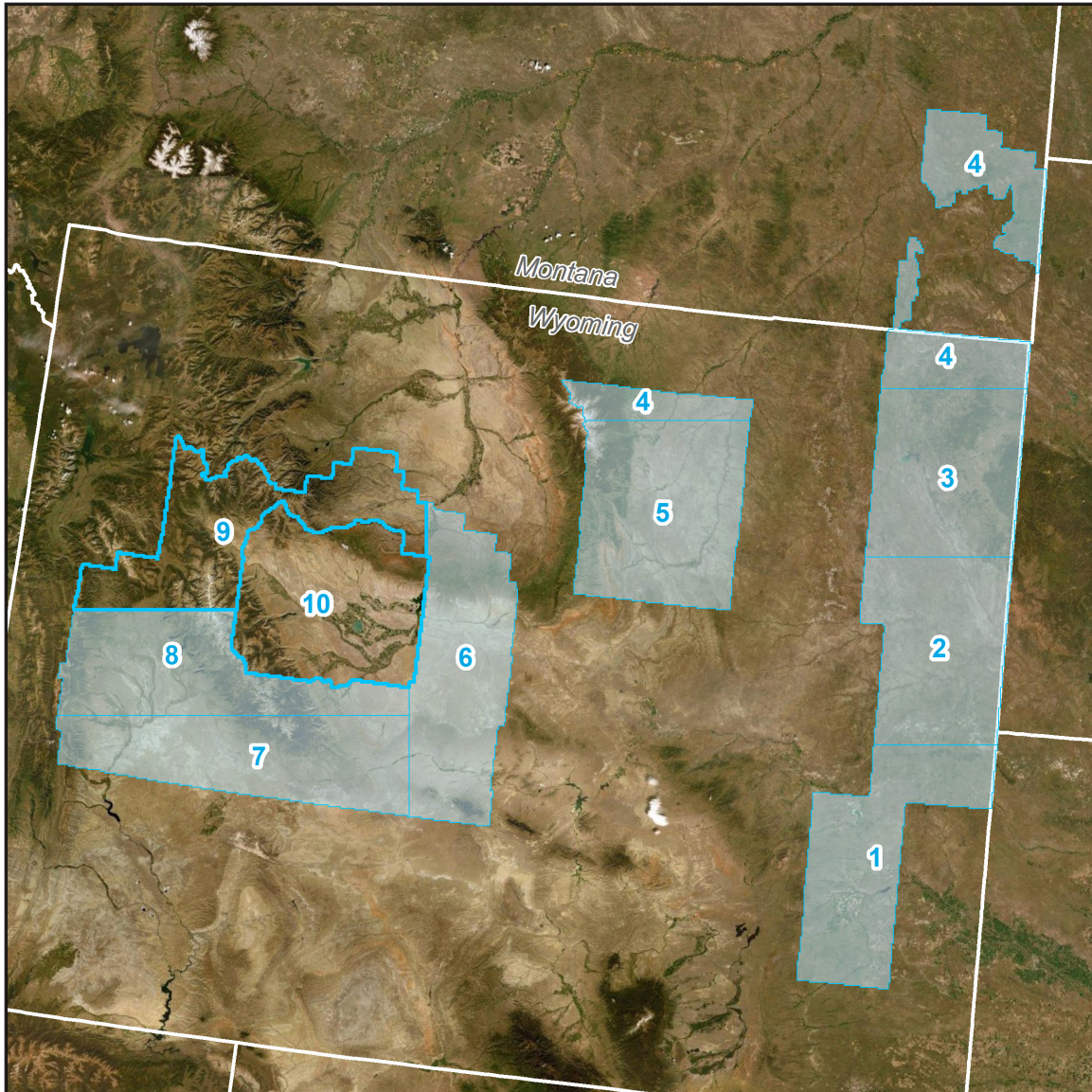


WY FEMA East 2019 D19

Lot 9 Blocks 9 and 10 Airborne Lidar Report

May 2020



Contract # G16PC00022
Task Order # 140G0219F0127



Contractor Woolpert
Project # 79935

Table of Contents

1. Overview	4
About.....	4
Purpose.....	4
Specifications	4
Spatial Reference	5
Deliverables	6
2. Acquisition	7
Flight Planning	7
Lidar Sensor Information	8
GNSS and IMU Equipment.....	9
Timeline.....	9
Acquisition Quality Assurance	10
3. Processing	11
Processing Summary	11
GNSS-IMU Trajectory Processing	11
Geometric Calibration	12
Lidar Data Classification.....	12
Hydrologic Flattening	13
Digital Elevation Model	14
Intensity Imagery	14
Building Footprints	14
Digital Surface Model	14
Metadata.....	14
4. Accuracy Assessment	16
Results Summary	16
Raw Lidar Swath Testing	16
Digital Elevation Model Testing.....	16
Inter-Swath Testing	18

Table of Contents

List of Figures

Figure 1-1. Project Area 3
Figure 1-2. Project Area - Blocks 9 and 10 4

List of Tables

Table 1-1. Spatial Reference System 1
Table 1-2. Deliverables 2
Table 2-1. Acquisition Requirements 5
Table 2-2. Leica Terrain Mapper Sensor Info 6
Table 2-3. Optech Galaxy PRIME Sensor Info 7
Table 2-4. GNSS Base Stations 8
Table 2-5. Project Acquisition Specifications 9

Appendix Documents

Appendix 1: Flight Logs A1-1

1. Overview

About

This project contains a comprehensive outline of the 140G0219F0127 WY FEMA East 2019 D19 task order issued by the United States Geological Survey's National Geospatial Technical Operations Center (USGS-NGTOC). This task order called for the acquisition and processing of QL2 data over 10 blocks that total approximately 32,466 square miles in Wyoming and Montana.

This report encompasses the Lot 9 Blocks 9 and 10 areas of interest. This AOI totals approximately 6,779 square miles and includes the following counties:

- Fremont
- Hot Springs
- Sublette

Purpose

This project will support the 3DEP mission, and the Federal Emergency Management Agency (FEMA) Risk Mapping, Assessment and Planning (MAP) program.

Specifications

Data for this task order was acquired and produced to meet USGS Lidar Base Specification v1.3 standards and the American Society of Photogrammetry and Remote Sensing (ASPRS) Positional Accuracy Standards for Digital Geospatial Data (Edition 1, Version 1.0).

Spatial Reference

Geospatial data products were produced using the following horizontal and vertical spatial data reference system.

Table 1-1. Spatial Reference System

Area of Interest		
Horizontal	EPSG Code	6350
	Datum	NAD83 (2011)
	Projection	Albers Equal Area
	Units	Meters
Vertical	Datum	NAVD88
	Geoid	GEOID12B
	Units	Meters
	Height Type	Orthometric

Task Order Deliverables

All data products produced as part of this task order are listed below. All tiled deliverables had a tile size of 1,000-meters x 1,000-meters. Tile names are derived from the coordinates of the lower left corner of each tile.

Table 1-2. Deliverables

Lidar Data	
Classified lidar point cloud data	Tiles in .las v1.4 format Classes <ul style="list-style-type: none"> • 1 – Processed, not Classified • 2 – Ground • 7 – Noise • 9 – Water • 17 – Bridge Decks • 18 – High Noise • 20 – Ignored Ground • 21 – Snow
Breaklines used for hydro-flattening	<ul style="list-style-type: none"> • Lake and River features as feature classes in an Esri file geodatabase <ul style="list-style-type: none"> • Water bodies greater than 2 acres as polygon features • Rivers 30.5 meters / 100 feet and greater in width as polyline features • Bridges used in DEM generation as point features in Esri shapefile format
Hydro-flattened bare earth digital elevation model (DEM)	1-meter pixel size, 32-bit floating-point; no bridges or overpass structures ERDAS .img format
Intensity Imagery	1-meter pixel size, 8-bit gray-scale (linear rescaling from 16-bit intensity) GeoTIFF format
Flight Line Index	Polygon features in an Esri file geodatabase
Control Data	
Lidar calibration points	Esri shapefile format
Lidar NVA checkpoints	Esri shapefile format
Lidar VVA checkpoints	Esri shapefile format
Other Data	
Tile Index	Esri shapefile format
Snow Polygons	Esri shapefile format
Metadata and Reports	
Metadata	Deliverable-level FGDC CSDGM/USGS MetaParser Compliant metadata in .xml format
Lidar Project Report	Project report with flight logs in .pdf format
Survey Report	Survey report in .pdf format

Figure 1-1. Project Area

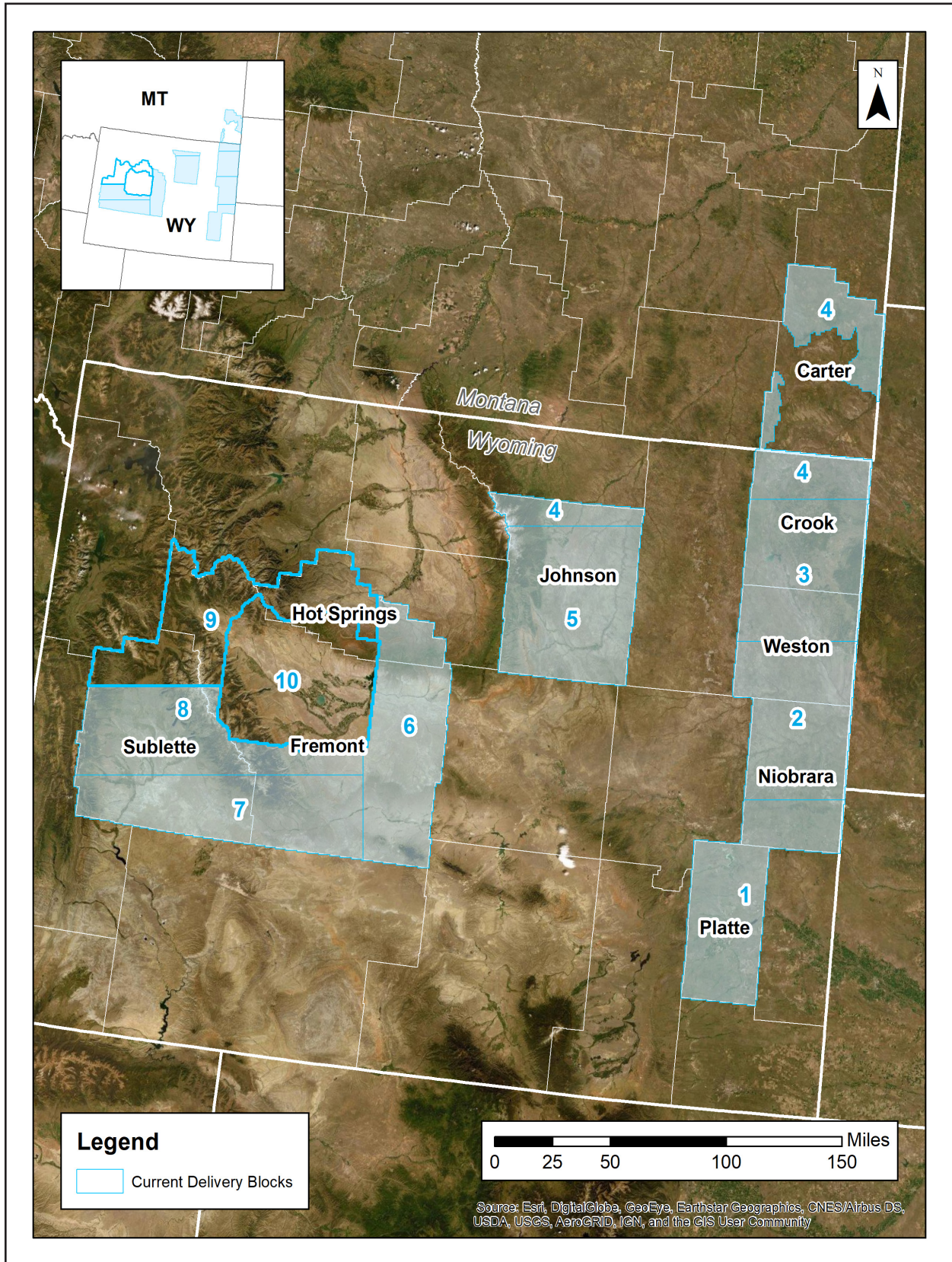
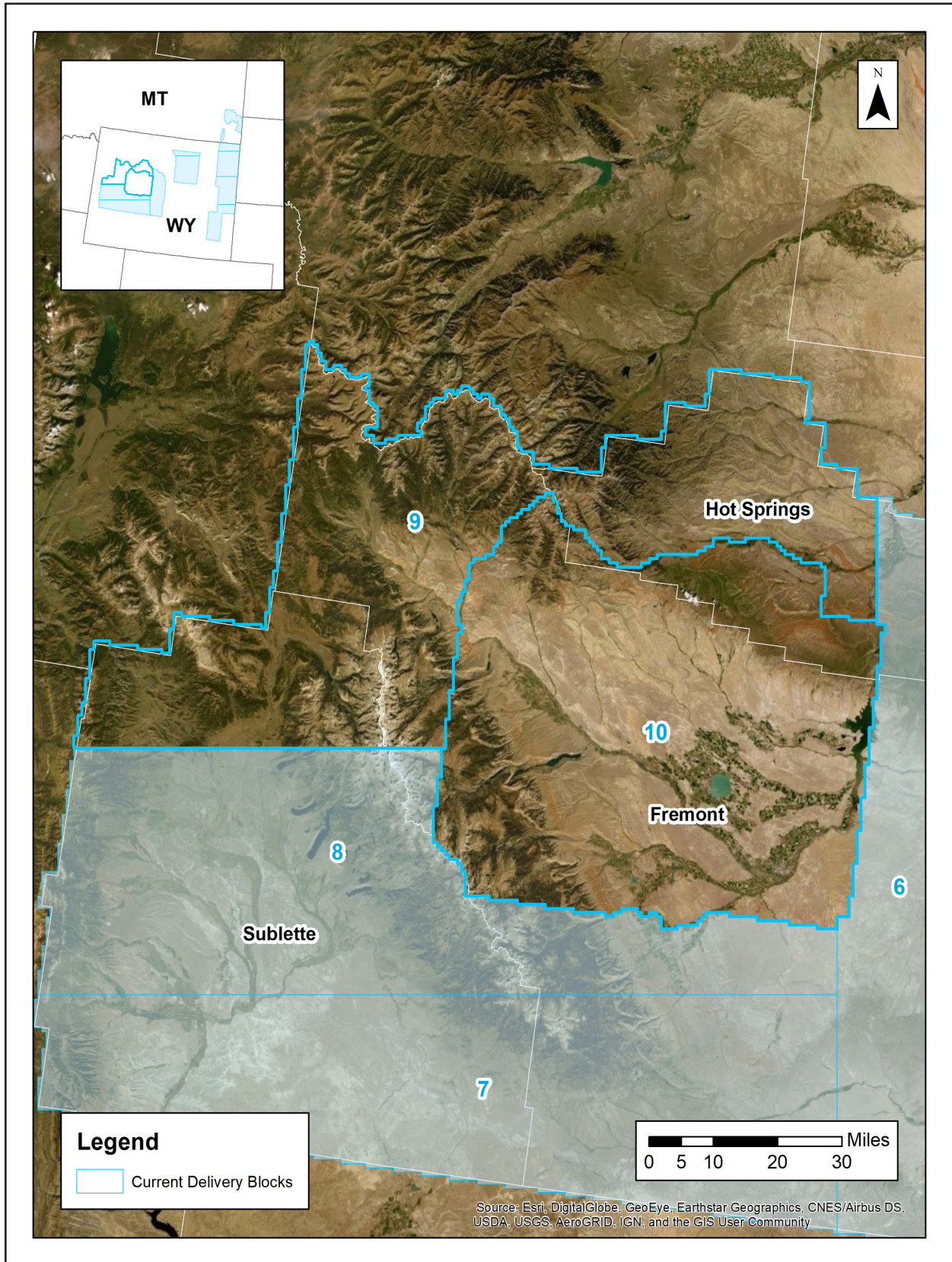


Figure 1-2. Project Area - Blocks 9 and 10



2. Acquisition

Flight Planning

Aerial lidar data was collected using the specifications listed below.

Table 2-1. Acquisition Requirements

Specification	Target
Resolution	<ul style="list-style-type: none"> • 2 points per square meter • 0.71-meter nominal point spacing
Overlap	At contractor's discretion, but enough to ensure there are no data gaps between usable portions of the swath and nominal point density is achieved
Acquisition Window	Fall 2019 leaf off window running through September 15, 2019
Acquisition Conditions	<ul style="list-style-type: none"> • Cloud and fog-free between the aircraft and ground • Ground is snow free • Ground has no unusual flooding or inundation, except in cases where the goal of the collection is to map the inundation • Preference of vegetation is leaf-off
Data Voids	Not allowed except <ul style="list-style-type: none"> • Where caused by water bodies • Where caused by areas of low near infra-red (NIR) reflectivity (i.e. asphalt or composition roofing) • Where caused by lidar shadowing from buildings or other features; or • Where appropriately filled-in by another swath
Control	Airborne Global Positioning System (ABGPS) and Inertial Measurement Unit (IMU) data to be used along with differentially-corrected GPS ground control points

Lidar Sensor Information

Aerial lidar data for this project was acquired using the Leica Terrain Mapper and Optech Galaxy PRIME lidar sensor systems. A total of 1,197 flight lines were collected for this project.

Table 2-2. Leica Terrain Mapper Sensor Info

Sensor Specifications	
Operating Altitude (m AGL)	300 - 5,500 at 10% reflective target
Maximum Measurement Rate (kHz)	2,000
Scan Angle	20 - 40
Scan Width	Up to 70% of flight altitude
Scan Frequency	Programmable up to 125 Hz (7,500 RPM), 250 scan lines per second
Number of Returns	15
Number of intensity measurements	15
Pulse Mode(s)	Up to 35 pulses in air
Laser Specifications	
Laser Beam Divergence	0.25 mrad (1/e)
Laser Classification	Class 4 laser product
Accuracy	
Range Resolution	< 1 cm RMS
Elevation Accuracy	< 5 cm 1 σ
Horizontal Accuracy	< 13 cm 1 σ
Physical Specifications	
Size (cm), Weight (kg) • Scanner • Control Electronics	<ul style="list-style-type: none"> • 37 W x 68 L x 26 H cm, 47 kg • 45 W x 47 D x 25 H cm, 33 kg
Operating Temperature • Scanner • Control Electronics	<ul style="list-style-type: none"> • 0 - 40°C cabin-side temperature • 0 - 40°C
Flight Management	Leica FlightPro
Power Consumption	922 W @ 22.0 – 30.3 VDC

Source: Leica TerrainMapper Data Sheet

<https://leica-geosystems.com/en-US/products/airborne-systems/topographic-lidar-sensors/leica-terrainmapper>

Table 2-3. Optech Galaxy PRIME Sensor Info

Sensor Performance	
Performance envelope ^{1, 2, 3, 4}	150-6000 m AGL, nominal
Absolute horizontal accuracy ^{2, 3}	1/10,000 × altitude; 1 σ
Absolute elevation accuracy ^{2, 3}	< 0.03-0.25 m RMSE from 150-6000 m AGL
Laser Configuration	
Topographic laser	1064-nm near-infrared
Laser classification	Class IV (US FDA 21 CFR 1040.10 and 1040.11; IEC/EN 60825-1)
Pulse repetition frequency (effective)	Programmable, 50-1000 kHz
Beam divergence	0.25 mrad (1/e)
Laser range precision ⁵	< 0.008 m, 1 σ
Minimum target separation distance	< 0.7 m (discrete)
Range capture	Up to 8 range measurements, including last
Intensity capture	Up to 8 intensity measurements, including last (12-bit)
Sensor Configuration	
Position and orientation system	POS AV™ AP60 (OEM); 220-channel dual frequency GNSS receiver; GNSS airborne antenna with Iridium filters; high-accuracy AIMU (Type 57); non-ITAR
Scan angle (FOV)	10-60°
Swath width	10-115% of altitude AGL
Scan frequency	0-120 Hz advertised (0-240 scan lines/sec)
Scan product	2000 maximum
Flight management system	Optech FMS (Airborne Mission Manager and Nav) with operator console
SwathTRAK™	Dynamic FOV for fixed-width data swaths in variable terrain
PulseTRAK™	Multipulse tracking algorithm with no density loss across PIA transition zones
Roll compensation	±5° minimum
Data storage	Removable SSD (primary); internal SSD (spare)
Power requirements	28 V; 400 W
Dimensions and weight	Sensor: 0.34 × 0.34 × 0.25 m, 27 kg PDU: 0.42 × 0.33 × 0.10 m, 6.5 kg
Operating temperature	0 to +35°C

1. Target reflectivity $\geq 20\%$; 99% detection probability
2. Dependent on selected operational parameters; assumes nominal FOV of up to 40° in standard atmospheric conditions (i.e. 23-km visibility) and use of Optech LMS Professional software suite
3. Angle of incidence $\leq 20^\circ$
4. Target size \geq laser footprint
5. Under Teledyne Optech test conditions, 1 sigma

Source: Optech Galaxy PRIME Airborne Lidar Terrain Mapper Specification Sheet
<http://info.teledyneoptech.com/acton/attachment/19958/f-0278/1/-/-/-/Galaxy%20PRIME%20Brochure.pdf>

GNSS and IMU Equipment

Prior to mobilizing to the project site, flight crews coordinated with the necessary air traffic control personnel to ensure airspace access. Crews were on-site, operating a Global Navigation Satellite System (GNSS) Base Station for the airborne GPS support.

Flight navigation during acquisition was performed using IGI CCNS (Computer Controlled Navigation System). The pilots are skilled at maintaining their planned trajectory, while holding the aircraft steady and level. If atmospheric conditions are such that the trajectory, ground speed, roll, pitch and/or heading cannot be properly maintained, the mission is aborted until suitable conditions occur.

Base stations were set by acquisition staff and was used to support the aerial data acquisition. See the table below for stations operated during acquisition for the whole project.

Table 2-4. GNSS Base Stations

Station Name	Latitude (DMS)	Longitude (DMS)	Ellipsoid Height L1 Phase Center (Meters)
Base2	42° 50' 00.77963	104° 24' 50.76535	1550.411
Base1	43° 19' 21.88533"	105° 02' 43.56787"	1514.653
WYRF_CORS	42° 49' 50.36453"	106° 19' 38.49771"	1634.444
WYLC_CORS	41° 06' 16.29488"	104° 46' 31.29307"	1824.826
P042_CORS	42° 03' 05.40043"	104° 54' 38.09615"	1423.359
KGCC_Airport	44° 20' 55.78123"	105° 32' 00.99884"	1306.038
AutoAnt	44° 20' 55.78123"	105° 32' 00.99884"	1306.038
P033_CORS	43° 57' 10.41596"	107° 23' 15.12165"	1376.681
KRIW_Airport	43° 03' 37.92270"	108° 27' 18.25590"	1648.117
P715_CORS	43° 30' 02.74785"	109° 41' 23.41714"	2988.93
BLW2_CORS	42° 46' 01.63709"	109° 33' 28.03604"	2216.398
TSWY_CORS	43° 40' 26.70325"	110° 35' 50.86433"	2191.496
AHID_CORS	42° 46' 23.20961"	111° 03' 49.41574"	1976.311

Timeline

Lidar data for Lot 9 Blocks 9 and 10 was collected July 26, 2019 through September 22, 2019. Acquisition specifications are listed in the table below. An initial quality control process was immediately performed on to review the data coverage, airborne GPS data, and trajectory solution.

Table 2-5. Project Acquisition Specifications

Settings	Leica TerrainMapper Acq. Blocks 1-4, 6-8	Leica TerrainMapper Acq. Block 5	Leica TerrainMapper Acq. Blocks 9, 12-13, 17-19	Leica TerrainMapper Acq. Blocks 10-11, 14-16, 20-21	Optech Galaxy PRIME Acq. Blocks 23 -24
Max. Number of Returns	15	15	15	15	8
Nominal Point Spacing	0.71 m	0.71 m	0.71 m	0.71 m	0.7 m
Nominal Point Density	2 ppsm	2 ppsm	2 ppsm	2 ppsm	2.73 ppsm
Flying Height Above Ground Level	3,000 m	3,200 m	3,250 m	3,500 m	1,600 m
Flight Speed	150 knots	150 knots	150 knots	150 knots	120 knots
Scan Angle	40°	40°	40°	40°	46°
Scan Rate Used	82 Hz	82 Hz	82 Hz	80 Hz	51 Hz
Pulse Rate Used	600 kHz	650 kHz	650 kHz	670 kHz	250 kHz
Multi-Pulse in Air	Enabled	Enabled	Enabled	Enabled	Enabled
Swath Width	2,184 m	2,329 m	2,366 m	2,548 m	1,358 m
Swath Overlap	25%	25%	25%	25%	20%

For more information, see the Flight Logs in Appendix 1.

Acquisition Quality Assurance

Woolpert developed a quality assurance and validation plan to ensure the acquired lidar data meets the USGS Base Specification Version 1.3. For quality assurance purposes, the lidar data was processed immediately following acquisition to verify the coverage has appropriate density, distribution, and no unacceptable data voids. Accompanying GPS data was post processed using differential and Kalman filter algorithms to derive a best estimate of trajectory. The quality of the solution was verified to be consistent with the accuracy requirements of the task order. Any required re-flights were scheduled at the earliest opportunity.

The spatial distribution of the geometrically usable first return lidar points was reviewed for density requirements as well as regular and uniform point distribution - verifying the lidar data is spaced so that 90% of the cells in a 2*NPS grid placed over the data contain at least one lidar point. The NPS assessment is made against single swath, first return data located within the geometrically usable center portion (typically ~90%) of each swath. Additionally, the data was reviewed for unacceptable data voids – verifying no area greater than or equal to $(4 \times \text{ANPS})^2$ exhibited data coverage gaps.

3. Processing

Processing Summary

Once the lidar data passed initial QC, the dataset was corrected for aircraft orientation and movement. This process used airborne inertial, orientation, and GPS data collected during acquisition along with ground-based GPS data. The data went through a geometric calibration that further corrected each laser point. This calibrated data set was used to create the LAS point cloud. The LAS point data was initially classified into “ground” and “non-ground”, then further refined using the classes specified in this task order. Breaklines were drawn to denote hydrological features. After the hydro-flattening process, the final deliverables products were created.

GNSS-IMU Trajectory Processing

Kinematic corrections for the aircraft position were resolved using aircraft GPS and static ground GPS (1-Hz) for each geodetic control (base station) for three subsystems: inertial measurement unit (IMU), sensor orientation information, and airborne GPS data.

Post-processing of the IMU system data and aircraft position with attitude data was completed to compute an optimally accurate, blended navigation solution based on Kalman filtering technology, or the smoothed best estimate of trajectory (SBET).

Software: POSPac Software v. 5.3, IPAS Pro v.1.35., Novatel Inertial Explorer v8.60.6129

Trajectory Quality

The GNSS trajectory and high-quality IMU data are key factors in determining the overall positional accuracy of the final sensor data. Within the trajectory processing, there are many factors that affect the overall quality, but the most indicative are the combined separation, the estimated positional accuracy, and the positional dilution of precision (PDOP).

Combination Separation

Combined separation is a measure of the difference between the forward-run and the backward-run solution of the trajectory. The Kalman filter was processed in both directions to remove the combined directional anomalies. In general, when these two solutions match closely, an optimally accurate and reliable solution is achieved.

The data for this task order was processed with a goal to maintain a combined separation difference of less than ten (10) centimeters.

Estimated Positional Accuracy

Estimated positional accuracy plots the standard deviations of the east, north, and vertical directions along a time scale of the trajectory. It illustrates loss of satellite lock issues, as well as issues arising from long baselines, noise, and/or other atmospheric interference.

PDOP

The PDOP measures the precision of the GPS solution in regard to the geometry of the satellites acquired and used for the solution.

The data for this task order was processed with a goal to maintain an average PDOP value below 3.0. Brief periods of PDOP over 3.0 are acceptable due to the calibration and control process if other metrics are within specification.

Geometric Calibration

After the initial phase was complete, a formal reduction process was performed on the data. Laser point position was calculated by associating the SBET position to each laser point return time, scan angle, intensity, etc. Raw laser point cloud data was created for the whole project area in LAS format. Automated line-to-line calibrations were then performed for system attitude parameters (pitch, roll, heading), mirror flex (scale) and GPS/IMU drift. Statistical reports were generated for comparison and used to make the necessary adjustments to remove any residual systematic error.

Software: Proprietary Software, TerraMatch v18, Leica CloudPro 1.2.4

Lidar Data Classification

LAS data was classified as ground and non-ground points with additional filters created to meet the task order classification specifications. Statistical absolute accuracy was assessed via direct comparisons of ground classified points to ground RTK survey data. Based on the statistical analysis, the lidar data was then adjusted to reduce the vertical bias when compared to the survey ground control of higher accuracy.

Calibrated LAS files were imported into the task order tiles and initially filtered to create a ground and non-ground class. Then additional classes were filtered as necessary to meet the following client-specified classes:

- Class 1 – Default / Processed, but not Classified
- Class 2 – Bare Earth Ground
- Class 7 – Low Noise
- Class 9 – Water
- Class 17 – Bridge Decks
- Class 18 – High Noise
- Class 20 – Ignored Ground
- Class 21 – Snow

Classified LAS files were evaluated through a series of manual QA/QC steps as well as a peer-based review to eliminate remaining artifacts from the ground class. This included a review of the DEM surface to remove artifacts and ensure topographic quality.

Software: Proprietary Software, TerraScan v18

Hydrologic Flattening

The lidar task order required compilation of breaklines defining the following types of water body features:

Lakes, reservoirs, ponds	Minimum of 2-acres or greater Compiled as closed polygons, collected at a constant elevation
Rivers, streams	Nominal width of 30.5 meters / 100 feet Compiled in direction of flow, with both sides maintaining an equal elevation gradient
Bridge breaklines	Breaklines used to enforce a logical terrain surface below a bridge

Woolpert utilized the following steps to hydrologically flatten the water bodies and for gradient hydrologic flattening of the double line streams within the existing lidar data:

1. The newly acquired lidar data was utilized to manually compile the hydrologic features in a 2D environment using the lidar intensity and bare earth surface. Open Source imagery was used as reference when necessary.
2. An integrated software approach was applied to combine the lidar data and 2D breaklines. This process “drapes” the 2D breaklines onto the 3D lidar surface model to assign an elevation. A monotonic process is performed to ensure the streams are consistently flowing in a gradient manner. A secondary step within the program verifies an equally matching elevation of both stream edges. The breaklines that characterize the closed water bodies are draped onto the 3D lidar surface and assigned a constant elevation at or just below ground elevation.
3. All classified ground points from inside the hydrologic feature polygons were reclassified to water, class nine (9).
4. All classified ground points were reclassified from within a buffer along the hydrologic feature breaklines to buffered ground, class twenty (20). The buffer distance was approximately the task order designed nominal pulse spacing distance.
5. Breaklines used for bridge removal during the hydrologic flattening were included with the hydrologic breakline geodatabase deliverable. The purpose of these breaklines is for a more aesthetically pleasing DEM appearance.
6. The lidar ground points and breaklines were used to generate a digital elevation model (DEM).
7. QA/QC for this task was performed by reviewing the hydrologically flattened DEM and hydrologic breakline features. Additionally, a combined approach utilizing commercial off the shelf software and proprietary methods were used to review the overall connectivity of the hydrologic breaklines.

TerraScan was used to add the hydrologic breakline vertices and export the lattice models.

Breaklines defining the water bodies greater than 2-acres were provided as polygon features. Rivers and streams with a nominal minimum width of 30.5 meters (100 feet) were provided as polyline features. All lake and river breaklines compiled as part of the flattening process were provided in an Esri file geodatabase.

Breaklines used for DEM generation were provided as point features in Esri shapefile format.

Software: TerraScan v18, TerraModeler v18, Esri ArcMap v10.4, LP360 v2018.1.57.4

Digital Elevation Model

TerraScan was used to add the hydrologic breakline vertices and export the lattice models. Class 2 (ground) lidar points in conjunction with the hydro breaklines and bridge breaklines were used to create 1-meter hydro-flattened bare-earth raster DEM files. Using automated scripting routines within ArcMap, an 32-bit floating point raster ERDAS .img file was created for each tile. Files were produced to the full extents of the tile boundaries. Each surface is reviewed using Global Mapper to check for any surface anomalies or incorrect elevations found within the surface.

Intensity Imagery

Lidar intensity data derived from the acquired lidar data was linearly rescaled from 16-bit intensity and provided as 1-meter pixel, 8-bit, 256 gray scale GeoTIFF format intensity imagery files. Files were produced to the full extents of the tile boundaries.

Software: TerraScan v18

Metadata

FGDC CSDGM/USGS MetaParser-compliant metadata was produced in XML format. The metadata includes a complete description of the task order client information, contractor information, project purpose, lidar acquisition and ground survey collection parameters, lidar acquisition and ground survey collection dates, spatial reference system information, data processing including acquisition quality assurance procedures, GPS and base station processing, geometric calibration, lidar classification, hydrologic flattening, intensity imagery development, and final product development.

Other metadata deliverables included Esri shapefiles of the ground control and QA/QC points and delivery tile index. A georeferenced, polygonal representation of the detailed extents of each acquired lidar swath was produced as a polygon feature class in an Esri file geodatabase.

4. Accuracy Statement

Horizontal Accuracy

The data sets was produced to meet ASPRS “Positional Accuracy Standards for Digital Geospatial Data” (2014) for a 25.9 cm RMSE_x / RMSE_y Horizontal Accuracy Class which equates to Positional Horizontal Accuracy = +/- 63.6 cm at a 95% confidence level.

Raw Lidar Swath Testing

This project required the lidar point cloud swath to be produced to meet a Non-Vegetated Vertical Accuracy (NVA) value of 19.6 cm at a 95% confidence level using an RMSE_z target value of 10 cm x 1.9600.

Digital Elevation Model Testing

This project required DEM data to be produced to meet a Non-Vegetated Vertical Accuracy (NVA) value of 19.6 cm at a 95% confidence level using an RMSE_z target value of 10 cm x 1.9600 and a Vegetated Vertical Accuracy (VVA) value of 0.30 cm at the 95th percentile error.

Appendix 1: Flight Logs

Woolpert Lidar Acquisition Log

Project Info				Date		
Project #	Project Name	Unique ID	Flight Date (UTC)	Day of Year	Flight #	
79935	Wyoming FEMA Block 11	Day207_90513_A	07/26/2019	207	A	

Crew	Equipment	Time			Airports
Pilot	Aircraft Make / Model / Tail #	Hobbs Start	Local Start	UTC Start	Departing
Gebhart	Cessna 404 Titan - N7079F	2268	10:13:00	16:13:00	RIW
Operator	Sensor Make / Model / Serial #	Hobbs End	Local End	UTC End	Arriving
Ryan	Leica Terrain Mapper - 90513	2273.8	15:23:00	21:23:00	RIW

Conditions							
Wind Dir (°)	Wind Speed (kts)	Visibility (mi)	Ceiling (ft)	Cloud Cover	Temp. (°C)	Dew Point (°C)	Pressure ("Hg)
0	0	10	200	Broken	24	3	3026
Air Speed (kts)		Altitude AGL (ft)		Altitude MSL (ft)		Airfield Elevation (ft)	
150		11,483		15,682		5,443	

Settings					
Point Spacing (m)	Point Density (ppsm)	Scan Angle/FOV (°)	Scan Frequency (Hz)	Pulse Rate (kHz)	Laser Power (%)
0.7		40	80	670	100

	Verify S-Turns Before Mission	Yes
--	--------------------------------------	-----

Line #	Direction	Start Time (UTC)	End Time (UTC)	Time On-Line	Satellite	PDOP	Line Notes/Comments
26	N	16:13:00			16	1.3	N.G. sensor crashed / rebooted
26	S	16:39:00	16:50:00	00:11:00	18	1.1	
25	N	16:53:00	17:04:00	00:11:00	17	1.2	
24	S	17:07:00	17:18:00	00:11:00	19	1.1	
23	N	17:21:00	17:32:00	00:11:00	18	1.3	
22	S	17:34:00	17:45:00	00:11:00	19	1.1	
21	N	17:47:00	17:58:00	00:11:00	19	1.2	
20	S	18:00:00	18:11:00	00:11:00	21	1.1	
19	N	18:13:00	18:24:00	00:11:00	20	1.2	
18	S	18:26:00	18:37:00	00:11:00	21	1.2	
17	N	18:39:00	18:50:00	00:11:00	24	1	
16	S	18:52:00	19:03:00	00:11:00	21	1.1	
15	N	19:05:00	19:16:00	00:11:00	21	1.1	
14	S	19:18:00	19:30:00	00:12:00	22	1.1	
13	N	19:32:00	19:44:00	00:12:00	20	1.2	
12	S	19:45:00	19:57:00	00:12:00	20	1.4	
11	N	20:00:00	20:11:00	00:11:00	20	1.2	
10	S	20:12:00	20:24:00	00:12:00	20	1.3	
9	N	20:26:00	20:37:00	00:11:00	22	1.1	
8	S	20:40:00	20:53:00	00:13:00	23	1.1	
7	N	20:55:00	21:08:00	00:13:00	21	1.1	
6	S	21:10:00	21:23:00	00:13:00	21	1.4	

Page 1	Verify S-Turns After Mission	Yes
---------------	-------------------------------------	-----

Additional Comments

Woolpert Lidar Acquisition Log

Project Info						Date		
Project #	Project Name		Unique ID			Flight Date (UTC)	Day of Year	Flight #
79935	Wyoming FEMA East		Day215_90515_A			08/03/2019	215	A
Crew		Equipment			Time			Airports
Pilot		Aircraft Make / Model / Tail #			Hobbs Start	Local Start	UTC Start	Departing
Finn		Cessna 404 Titan - N475RC			1816.1	10:07:00	16:07:00	RWI
Operator		Sensor Make / Model / Serial #			Hobbs End	Local End	UTC End	Arriving
DeHart		Leica Terrain Mapper - 90515			1820.4	01:20:00	19:20:00	GCC
Conditions								
Wind Dir (°)	Wind Speed (kts)	Visibility (mi)	Ceiling (ft)	Cloud Cover	Temp. (°C)	Dew Point (°C)	Pressure ("Hg)	
20	16	10	12,000	Clear	23	8	30.25	
Air Speed (kts)		Altitude AGL (ft)	Altitude MSL (ft)	Airfield Elevation (ft)				
150		14,000	14,000	5,350				
Settings								
Point Spacing (m)	Point Density (ppsm)	Scan Angle/FOV (°)		Scan Frequency (Hz)	Pulse Rate (kHz)	Laser Power (%)		
0.35	10	40		81	600	100		
							Verify S-Turns Before Mission	Yes
Line #	Direction	Start Time (UTC)	End Time (UTC)	Time On-Line	Satellite	PDOP	Line Notes/Comments	
9	N	16:07:00	16:11:00	00:04:00	12	1.7	Area 5	
10	S	16:14:00	16:18:00	00:04:00	12	1.7		
11	N	16:20:00	16:24:00	00:04:00	12	1.7		
12	S	16:27:00	16:31:00	00:04:00	12	1.5		
13	N	16:34:00	16:39:00	00:05:00	12	1.5		
72	S	17:09:00	17:23:00	00:14:00	11	1.6	Area 10	
71	N	17:27:00	17:42:00	00:15:00	13	1.5		
70	S	17:45:00	18:00:00	00:15:00	12	1.5		
69	N	18:04:00	18:21:00	00:17:00	14	1.2		
68	S	18:24:00	18:41:00	00:17:00	14	1.5		
67	N	18:44:00	19:01:00	00:17:00	14	1.5		
66	S	19:04:00	19:20:00	00:16:00	13	1.5	Clouds at southern end	
Page 1								
							Verify S-Turns After Mission	Yes
Additional Comments								

Woolpert Lidar Acquisition Log

Project Info				Date		
Project #	Project Name	Unique ID	Flight Date (UTC)	Day of Year	Flight #	
79935	Wyoming FEMA East	Day220_90515_A	08/08/2019	220	A	
Crew		Equipment	Time			Airports
Pilot	Aircraft Make / Model / Tail #	Hobbs Start	Local Start	UTC Start	Departing	
Gilbero	Cessna 404 Titan - N475RC	1822.2	08:43:00	14:43:00	RIW	
Operator	Sensor Make / Model / Serial #	Hobbs End	Local End	UTC End	Arriving	
DeHart	Leica Terrain Mapper - 90515	1826.9	12:25:00	18:25:00	RIW	

Conditions							
Wind Dir (°)	Wind Speed (kts)	Visibility (mi)	Ceiling (ft)	Cloud Cover	Temp. (°C)	Dew Point (°C)	Pressure ("Hg)
280	12	10	12,000	Broken	17	10	30.12
Air Speed (kts)		Altitude AGL (ft)	Altitude MSL (ft)	Airfield Elevation (ft)			
150		14,000	14,000	5,512			

Settings					
Point Spacing (m)	Point Density (ppsm)	Scan Angle/FOV (°)	Scan Frequency (Hz)	Pulse Rate (kHz)	Laser Power (%)
0.35	10	40	81	600	100

							Verify S-Turns Before Mission	Yes
Line #	Direction	Start Time (UTC)	End Time (UTC)	Time On-Line	Satellite	PDOP	Line Notes/Comments	
18	N	14:43:00	14:54:00	00:11:00	14	1.5	Area 5	
17	S	14:57:00	15:07:00	00:10:00	14	1.5		
16	N	15:12:00	15:19:00	00:07:00	12	1.7		
15	S	15:22:00	15:28:00	00:06:00	11	1.8		
14	N	15:31:00	15:38:00	00:07:00	11	1.8		
65	S	16:09:00	16:26:00	00:17:00	11	1.5	Area 10	
64	N	16:29:00	16:46:00	00:17:00	11	2		
63	S	16:49:00	17:05:00	00:16:00	14	1.7		
62	N	17:09:00	17:25:00	00:16:00	14	1.7		
61	S	17:29:00	17:46:00	00:17:00	15	1.7		
60	N	17:49:00	18:06:00	00:17:00	16	1.8		
59	S	18:09:00	18:25:00	00:16:00	17	1.6		

Additional Comments

Woolpert Lidar Acquisition Log

Project Info						Date		
Project #	Project Name			Unique ID		Flight Date (UTC)	Day of Year	Flight #
79935	FEMA WY block 10			Day224_90515_A		08/12/2019	224	A
Crew		Equipment			Time			Airports
Pilot	Aircraft Make / Model / Tail #			Hobbs Start	Local Start	UTC Start	Departing	
Gilbaro	Cessna 404 Titan - N475RC			1837.8	08:52:00	14:52:00	RIW	
Operator	Sensor Make / Model / Serial #			Hobbs End	Local End	UTC End	Arriving	
Kennedy	Leica Terrain Mapper - 90515			1843.6	14:40:00	20:40:00	RIW	
Conditions								
Wind Dir (°)	Wind Speed (kts)	Visibility (mi)	Ceiling (ft)	Cloud Cover	Temp. (°C)	Dew Point (°C)	Pressure ("Hg)	
270	10	10		Clear	17	1	30.17	
Air Speed (kts)		Altitude AGL (ft)	Altitude MSL (ft)	Airfield Elevation (ft)				
150		11,483	16,319	5,516				
Settings								
Point Spacing (m)	Point Density (ppsm)	Scan Angle/FOV (°)		Scan Frequency (Hz)	Pulse Rate (kHz)	Laser Power (%)		
0.7	2	40		80	670	100		
							Verify S-Turns Before Mission	Yes
Line #	Direction	Start Time (UTC)	End Time (UTC)	Time On-Line	Satellite	PDOP	Line Notes/Comments	
45	N	15:19:00	15:33:00	00:14:00	12	1.9		
44	S	15:37:00	15:51:00	00:14:00	12	1.9		
43	N	15:55:00	16:09:00	00:14:00	14	1.4		
42	S	16:13:00	16:27:00	00:14:00	13	2		
41	N	16:31:00	16:46:00	00:15:00	13	1.7		
40	S	16:49:00	17:01:00	00:12:00	15	1.4		
39	N	17:05:00	17:17:00	00:12:00	15	1.4		
38	S	17:21:00	17:33:00	00:12:00	15	1.3		
37	N	17:36:00	17:49:00	00:13:00	14	1.3		
36	S	17:52:00	18:05:00	00:13:00	13	1.8		
35	N	18:08:00	18:21:00	00:13:00	13	1.8		
34	S	18:25:00	18:37:00	00:12:00	13	2		
33	N	18:41:00	18:53:00	00:12:00	12	1.8	Clouds waypoint 9-15	
32	S	18:56:00	19:08:00	00:12:00	13	1.9	Roll limit waypoints 8-9	
31	N	19:12:00	19:24:00	00:12:00	14	1.8		
30	S	19:28:00	19:40:00	00:12:00	14	1.4		
29	N	19:44:00	19:57:00	00:13:00	15	1.4	Roll limit waypoints 34-36	
28	S	20:00:00	20:12:00	00:12:00	16	1.4		
Page 1						Verify S-Turns After Mission	Yes	
Additional Comments								

Woolpert Lidar Acquisition Log

Project Info				Date		
Project #	Project Name	Unique ID	Flight Date (UTC)	Day of Year	Flight #	
79935	FEMA Wyoming block 10	Day225_90515_A	08/13/2019	225	A	

Crew	Equipment		Time			Airports
Pilot	Aircraft Make / Model / Tail #		Hobbs Start	Local Start	UTC Start	Departing
Gibilaro	Cessna 404 Titan - N475RC		1844.8	09:00:00	15:00:00	RIW
Operator	Sensor Make / Model / Serial #		Hobbs End	Local End	UTC End	Arriving
Kennedy	Leica Terrain Mapper - 90515		1849.7	13:54:00	19:54:00	RIW

Conditions							
Wind Dir (°)	Wind Speed (kts)	Visibility (mi)	Ceiling (ft)	Cloud Cover	Temp. (°C)	Dew Point (°C)	Pressure ("Hg)
0	0	10		Clear	17	6	30.3
Air Speed (kts)		Altitude AGL (ft)		Altitude MSL (ft)		Airfield Elevation (ft)	
150		11,483		16,319		5,516	

Settings					
Point Spacing (m)	Point Density (ppsm)	Scan Angle/FOV (°)	Scan Frequency (Hz)	Pulse Rate (kHz)	Laser Power (%)
0.7	2	40	80	670	100

	Verify S-Turns Before Mission	Yes
--	--------------------------------------	-----

Line #	Direction	Start Time (UTC)	End Time (UTC)	Time On-Line	Satellite	PDOP	Line Notes/Comments
27	N	15:31:00	15:41:00	00:10:00	14	1.6	
26	S	15:45:00	15:55:00	00:10:00	15	1.8	
25	N	15:59:00	16:09:00	00:10:00	16	1.5	
24	S	16:12:00	16:22:00	00:10:00	14	1.8	
23	N	16:26:00	16:36:00	00:10:00	15	1.6	
22	S	16:39:00	16:49:00	00:10:00	17	1.4	
21	N	16:54:00	17:04:00	00:10:00	18	1.4	
20	S	17:07:00	17:17:00	00:10:00	17	1.5	
19	N	17:21:00	17:31:00	00:10:00	18	1.2	overexposure waypoint 14
18	S	17:34:00	17:44:00	00:10:00	15	1.7	
17	N	17:48:00	17:58:00	00:10:00	15	1.7	
16	S	18:02:00	18:12:00	00:10:00	16	1.6	
15	N	18:16:00	18:26:00	00:10:00	14	2.1	
14	S	18:30:00	18:40:00	00:10:00	13	1.9	
13	N	18:43:00	18:53:00	00:10:00	15	1.5	Roll warning waypoint 25
12	S	18:57:00	19:09:00	00:12:00	14	1.8	Clouds waypoints 42-45
11	N	19:12:00	19:22:00	00:10:00	16	1.4	
10	S	19:25:00	19:35:00	00:10:00	18	1.5	Roll warning waypoint 27-28

Page 1	Verify S-Turns After Mission	Yes
--------	-------------------------------------	-----

Additional Comments

Woolpert Lidar Acquisition Log

Project Info				Date			
Project #	Project Name	Unique ID	Flight Date (UTC)	Day of Year	Flight #		
79935	FEMA Wyoming Blocks 10, 12, 14	Day226_90515_A	08/14/2019	226	A		
Crew		Equipment		Time			Airports
Pilot	Aircraft Make / Model / Tail #		Hobbs Start	Local Start	UTC Start	Departing	
Gibilaro	Cessna 404 Titan - N475RC		1850.9	08:44:00	14:44:00	RIW	
Operator	Sensor Make / Model / Serial #		Hobbs End	Local End	UTC End	Arriving	
Kennedy	Leica Terrain Mapper - 90515		1855	12:53:00	18:53:00	RIW	
Conditions							
Wind Dir (°)	Wind Speed (kts)	Visibility (mi)	Ceiling (ft)	Cloud Cover	Temp. (°C)	Dew Point (°C)	Pressure ("Hg)
330	7	10		Clear	17	7	30.27
Air Speed (kts)	Altitude AGL (ft)	Altitude MSL (ft)	Airfield Elevation (ft)				
150	11,483	16,319	5,516				
Settings							
Point Spacing (m)	Point Density (ppsm)	Scan Angle/FOV (°)	Scan Frequency (Hz)	Pulse Rate (kHz)	Laser Power (%)		
7	2	40	80	670	100		

Verify S-Turns Before Mission

Line #	Direction	Start Time (UTC)	End Time (UTC)	Time On-Line	Satellite	PDOP	Line Notes/Comments
9	N	15:11:00	15:21:00	00:10:00	13	1.8	Overexposure on waypoint 2
8	S	15:24:00	15:34:00	00:10:00	14	1.7	
7	N	15:38:00	15:49:00	00:11:00	16	1.7	Overexposure on waypoints 14-15
6	S	15:52:00	16:03:00	00:11:00	18	1.4	
5	N	16:08:00	16:19:00	00:11:00	17	2.1	
4	S	16:22:00	16:32:00	00:10:00	18	1.4	
3	N	16:37:00	16:47:00	00:10:00	21	1.3	Overexposure on waypoints 9-10
2	S	16:51:00	17:01:00	00:10:00	20	1.4	Roll warning waypoint 14
1	N	17:05:00	17:16:00	00:11:00	20	1.4	
68	S	17:29:00	17:45:00	00:16:00	19	1.4	Start Block 12 / Clouds on line
67	N	17:49:00	18:05:00	00:16:00	16	1.9	Clouds, turbulence entire line
40	S	18:16:00	18:32:00	00:16:00	15	2.2	Start Block 14 / Clouds on line

Page 1

Verify S-Turns After Mission

Additional Comments

--

Woolpert Lidar Acquisition Log

Project Info						Date		
Project #	Project Name			Unique ID		Flight Date (UTC)	Day of Year	Flight #
79935	FEMA Wyoming Block 14			Day227_90515_A		08/15/2019	227	A
Crew		Equipment			Time			Airports
Pilot	Aircraft Make / Model / Tail #			Hobbs Start	Local Start	UTC Start	Departing	
Gibilaro	Cessna 404 Titan - N475RC			1856.1	09:20:00	15:20:00	RIW	
Operator	Sensor Make / Model / Serial #			Hobbs End	Local End	UTC End	Arriving	
Kennedy	Leica Terrain Mapper - 90515			1859.3	12:32:00	18:32:00	CPR	
Conditions								
Wind Dir (°)	Wind Speed (kts)	Visibility (mi)	Ceiling (ft)	Cloud Cover	Temp. (°C)	Dew Point (°C)	Pressure ("Hg)	
140	4	10		Clear	18	9	30.2	
Air Speed (kts)	Altitude AGL (ft)	Altitude MSL (ft)	Airfield Elevation (ft)					
150	11,483	17,159	5,516					
Settings								
Point Spacing (m)	Point Density (ppsm)	Scan Angle/FOV (°)	Scan Frequency (Hz)	Pulse Rate (kHz)	Laser Power (%)			
7	2	40	80	670	100			
						Verify S-Turns Before Mission	Yes	
Line #	Direction	Start Time (UTC)	End Time (UTC)	Time On-Line	Satellite	PDOP	Line Notes/Comments	
21	S	15:51:00	16:07:00	00:16:00	11	1.5		
20	N	16:11:00	16:28:00	00:17:00	11	1.7		
22	S	16:33:00	16:48:00	00:15:00	13	1.5		
23	N	16:54:00	17:11:00	00:17:00	13	1.5	Roll warning waypoint 54	
24	S	17:14:00	17:30:00	00:16:00	15	1.3	Roll warning waypoint 1-2	
25	N	17:33:00	17:49:00	00:16:00	13	1.8	Roll warning waypoint 70-71	
							Base overflight @ 18:05	
						Verify S-Turns After Mission	Yes	
Additional Comments								

Woolpert Lidar Acquisition Log

Project Info				Date		
Project #	Project Name	Unique ID	Flight Date (UTC)	Day of Year	Flight #	
79935	FEMA Wyoming Liadar	Day229_90513_A	08/17/2019	229	A	

Crew	Equipment	Time			Airports
Pilot	Aircraft Make / Model / Tail #	Hobbs Start	Local Start	UTC Start	Departing
Gebhart	Cessna 404 Titan - N404CP	2318.3	09:44:00	15:44:00	KCPR
Operator	Sensor Make / Model / Serial #	Hobbs End	Local End	UTC End	Arriving
Galambos	Leica Terrain Mapper - 90513	2324.3	15:10:00	20:10:00	KRIW

Conditions							
Wind Dir (°)	Wind Speed (kts)	Visibility (mi)	Ceiling (ft)	Cloud Cover	Temp. (°C)	Dew Point (°C)	Pressure ("Hg)
210	9	10		Clear	16	3	29.91
Air Speed (kts)	Altitude AGL (ft)	Altitude MSL (ft)	Airfield Elevation (ft)				
150	10,663	17,477	5,302				

Settings					
Point Spacing (m)	Point Density (ppsm)	Scan Angle/FOV (°)	Scan Frequency (Hz)	Pulse Rate (kHz)	Laser Power (%)
0.7	2	40	82	650	100

	Verify S-Turns Before Mission	Yes
--	--------------------------------------	-----

Line #	Direction	Start Time (UTC)	End Time (UTC)	Time On-Line	Satellite	PDOP	Line Notes/Comments
28	S	15:44:21	16:00:41	00:16:20	21	1.1	Block 13/Takeoff: 1432z/gps 14:22:00
27	N	16:03:00	16:19:32	00:16:32	18		
26	S	16:22:40	16:38:57	00:16:17	20	1.3	
25	N	16:41:22	16:58:00	00:16:38	19	1.3	
24	S	17:00:35	17:17:05	00:16:30	19	1.2	
23	N	17:19:30	17:36:07	00:16:37	19	1.2	
22	S	17:17:08	17:55:44	00:38:36	19	1.2	
21	N	17:58:22	18:14:42	00:16:20	19	1.2	
21	N	18:19:16			19	1.2	manual--confusion with the CCNS reboot
20	S	18:26:00	18:41:50	00:15:50	19	1.2	
19	N	18:45:48	19:02:07	00:16:19	19	1.2	
18	S	19:05:03	19:20:55	00:15:52	22	1.1	
17	N	19:23:15	19:39:23	00:16:08	22	1.1	
16	S	19:42:08	19:58:09	00:16:01	22	1.1	
15	N	20:00:30	20:10:10	00:09:40	22	1.2	The Lidar detected a laser safety fault condition red alert circles and fly over the base

Page 1	Verify S-Turns After Mission	Yes
--------	-------------------------------------	-----

Additional Comments

Woolpert Lidar Acquisition Log

Project Info						Date		
Project #	Project Name			Unique ID		Flight Date (UTC)	Day of Year	Flight #
79935	FEMA Wyoming Lidar			Day230_90513_A		08/18/2019	230	A
Crew		Equipment			Time			Airports
Pilot	Aircraft Make / Model / Tail #			Hobbs Start	Local Start	UTC Start	Departing	
Gebhart	Cessna 404 Titan - N404CP			2324.9	11:12:00	17:12:00	KCPR	
Operator	Sensor Make / Model / Serial #			Hobbs End	Local End	UTC End	Arriving	
Galambos	Leica Terrain Mapper - 90513			2331.7	16:14:00	22:14:37	KRIW	
Conditions								
Wind Dir (°)	Wind Speed (kts)	Visibility (mi)	Ceiling (ft)	Cloud Cover	Temp. (°C)	Dew Point (°C)	Pressure ("Hg)	
		10	1,000	Scattered	14	10	30.01	
Air Speed (kts)		Altitude AGL (ft)	Altitude MSL (ft)	Airfield Elevation (ft)				
150		10,663	17,477	5,302				
Settings								
Point Spacing (m)	Point Density (ppsm)	Scan Angle/FOV (°)		Scan Frequency (Hz)	Pulse Rate (kHz)	Laser Power (%)		
0.7	2	40		82	650	100		
							Verify S-Turns Before Mission	Yes
Line #	Direction	Start Time (UTC)	End Time (UTC)	Time On-Line	Satellite	PDOP	Line Notes/Comments	
							Block 13/Takeoff: 15:53z/gps 15:45:45	
							Wind is variable at 3	
15	S	17:12:24	17:21:00	00:08:36	24	1	Lidar detected a safety issue	
test							UL001/test manual start/stop	
15	S	17:27:48					UL003/Manual Start/stop Eyesafe shutoff	
15	S	17:35:05	17:45:37	00:10:32	21	1.2	UL003/Manual Start/stop - Patch	
14	N	17:48:00	18:06:07	00:18:07	19	1.3	Mountain Wave	
13	S	18:09:32	18:25:47	00:16:15	18	1.5		
12	N	18:28:12	18:45:46	00:17:34	19	1.3		
11	S	18:48:06	19:04:05	00:15:59	19	1.3		
10	N	19:06:31	19:23:36	00:17:05	22	1.1		
9	S	19:26:31	19:42:30	00:15:59	23	1		
8	N	18:45:55	20:03:28	01:17:33	21	1.1		
7	S	20:05:52	20:21:48	00:15:56	20	1.2		
6	N	20:24:10	20:41:14	00:17:04	20	1.1		
5	S	20:43:44	20:59:43	00:15:59	16	1.2		
4	N	21:01:54	21:19:09	00:17:15	17	1.2		
3	S	21:21:24	21:37:23	00:15:59	17	1.2		
2	N	21:39:28	21:56:13	00:16:45	16	1.5		
1	S	21:58:35	22:14:37	00:16:02	19	1.2		
							Verify S-Turns After Mission	Yes
Additional Comments								

Woolpert Lidar Acquisition Log

Project Info						Date		
Project #	Project Name		Unique ID			Flight Date (UTC)	Day of Year	Flight #
79935	FEMA Wyoming Lidar		Day232_90513_A			08/20/2019	232	A
Crew		Equipment			Time			Airports
Pilot	Aircraft Make / Model / Tail #			Hobbs Start	Local Start	UTC Start	Departing	
Gebhart	Cessna 404 Titan - N404CP			2338.5	09:15:00	15:15:00	KCPR	
Operator	Sensor Make / Model / Serial #			Hobbs End	Local End	UTC End	Arriving	
Galambos	Leica Terrain Mapper - 90513			2344.6	14:23:00	20:23:00	KRIW	
Conditions								
Wind Dir (°)	Wind Speed (kts)	Visibility (mi)	Ceiling (ft)	Cloud Cover	Temp. (°C)	Dew Point (°C)	Pressure ("Hg)	
300	7	10		Clear	19	5	30.19	
Air Speed (kts)		Altitude AGL (ft)	Altitude MSL (ft)	Airfield Elevation (ft)				
150		11,483	17,000	6,017				
Settings								
Point Spacing (m)	Point Density (ppsm)	Scan Angle/FOV (°)		Scan Frequency (Hz)	Pulse Rate (kHz)	Laser Power (%)		
0.7	2	40		80	670	100		
							Verify S-Turns Before Mission	Yes
Line #	Direction	Start Time (UTC)	End Time (UTC)	Time On-Line	Satellite	PDOP	Line Notes/Comments	
26	S	15:15:54	15:28:15	00:12:21	21	1.2	Block 21/Takeoff: 14:40z/gps 14:30:44	
27	N	15:30:35	15:42:38	00:12:03	23	1.1		
28	S	15:45:28	15:58:14	00:12:46	21	1.4		
29	N	16:00:44	16:12:38	00:11:54	23	1.2		
30	S	16:15:46	16:28:07	00:12:21	22	1.1		
31	N	16:30:18	16:42:17	00:11:59	21	1.2		
							Block 9	
63	N	17:21:44	17:34:05	00:12:21	22	1.2		
62	S	17:36:52	17:48:37	00:11:45	24	1.2		
61	N	17:51:09	18:03:49	00:12:40	21	1.2		
60	S	18:06:38	18:18:35	00:11:57	20	1.1		
59	N	18:21:21	18:34:39	00:13:18	20	1.4		
58	S	18:37:18	18:49:35	00:12:17	21	1.2		
57	N	18:51:54	19:04:56	00:13:02	22	1.2		
56	S	19:07:34	19:20:15	00:12:41	24	1.1		
55	N	19:22:48	19:35:50	00:13:02	22	1.2		
54	S	19:39:28	19:52:18	00:12:50	22	1.2		
53	N	19:54:40	20:08:02	00:13:22	22	1.1		
52	S	20:10:37	20:23:48	00:13:11	22	1.2		
						Page 1	Verify S-Turns After Mission	Yes
Additional Comments								

Woolpert Lidar Acquisition Log

Project Info						Date		
Project #	Project Name		Unique ID			Flight Date (UTC)	Day of Year	Flight #
79935	FEMA Wyoming Liadar		Day236_90513_A			08/24/2019	236	A
Crew		Equipment			Time			Airports
Pilot	Aircraft Make / Model / Tail #			Hobbs Start	Local Start	UTC Start	Departing	
Gebhart	Cessna 404 Titan - N404CP			2350.5	11:17:00	17:17:00	KCPR	
Operator	Sensor Make / Model / Serial #			Hobbs End	Local End	UTC End	Arriving	
Galambos	Leica Terrain Mapper - 90513			2356.7	15:28:00	20:10:00	KCPR	
Conditions								
Wind Dir (°)	Wind Speed (kts)	Visibility (mi)	Ceiling (ft)	Cloud Cover	Temp. (°C)	Dew Point (°C)	Pressure ("Hg)	
230	20	10		Clear	18	7	30.04	
Air Speed (kts)		Altitude AGL (ft)	Altitude MSL (ft)	Airfield Elevation (ft)				
150		11,483	16,811	5,328				
Settings								
Point Spacing (m)	Point Density (ppsm)	Scan Angle/FOV (°)		Scan Frequency (Hz)	Pulse Rate (kHz)	Laser Power (%)		
0.7	2	40		80	670	100		
							Verify S-Turns Before Mission	Yes
Line #	Direction	Start Time (UTC)	End Time (UTC)	Time On-Line	Satellite	PDOP	Line Notes/Comments	
							Block 9 (19-30 & 52-63 cmplt)	
51	N	17:17:12	17:30:39	00:13:27	20	1.2	Overfly Base:	
50	S	17:33:25	17:46:57	00:13:32	20	1.2	GPS 15:50:50/ takeoff:16:03z	
49	N	17:49:58	18:03:40	00:13:42	19	1.2	clouds wpts 18-26	
31	S	18:09:40	18:19:52	00:10:12	18	1.3		
32	N	18:22:28	18:33:30	00:11:02	19	1.3		
33	S	18:36:54	18:48:27	00:11:33	20	1.7		
34	N	18:51:15	19:03:31	00:12:16	20	1.2		
35	S	19:06:33	19:18:53	00:12:20	21	1.3		
36	N	19:22:01	19:35:40	00:13:39	23	1.2		
37	S	19:38:35	19:51:41	00:13:06	23	1.1		
38	N	19:54:02	20:07:39	00:13:37	23	1.2		
39	S	20:10:40	20:23:28	00:12:48	20	1.2		
40	N	20:20:53	20:39:08	00:18:15	20	1.3		
41	S	20:42:00	20:55:02	00:13:02	24	1		
42	N	20:57:33	20:10:26	23:12:53	23	1	1-2 emg shutoff refly	
							Verify S-Turns After Mission	Yes

Additional Comments

Woolpert Lidar Acquisition Log

Project Info						Date			
Project #	Project Name			Unique ID		Flight Date (UTC)	Day of Year	Flight #	
79935	FEMA Wyoming Block 9			Day236_90515_A		08/24/2019	236	A	
Crew		Equipment			Time			Airports	
Pilot		Aircraft Make / Model / Tail #			Hobbs Start	Local Start	UTC Start	Departing	
Gibilaro		Cessna 404 Titan - N475RC			1899	07:41:00	13:41:00	CPR	
Operator		Sensor Make / Model / Serial #			Hobbs End	Local End	UTC End	Arriving	
Kennedy		Leica Terrain Mapper - 90515			1905	13:45:00	19:45:00	CPR	
Conditions									
Wind Dir (°)	Wind Speed (kts)	Visibility (mi)	Ceiling (ft)	Cloud Cover	Temp. (°C)	Dew Point (°C)	Pressure ("Hg)		
240	9	10		Clear	9	8	30.04		
Air Speed (kts)		Altitude AGL (ft)		Altitude MSL (ft)	Airfield Elevation (ft)				
150		10,663		16,893	5,344				
Settings									
Point Spacing (m)	Point Density (ppsm)	Scan Angle/FOV (°)		Scan Frequency (Hz)	Pulse Rate (kHz)	Laser Power (%)			
7	2	40		80	670	100			
						Verify S-Turns Before Mission	Yes		
Line #	Direction	Start Time (UTC)	End Time (UTC)	Time On-Line	Satellite	PDOP	Line Notes/Comments		
18	N	14:59:00	15:13:00	00:14:00	15	1.5	CORS overflight at 14:42		
17	S	15:16:00	15:29:00	00:13:00	15	1.5			
16	N	15:32:00	15:46:00	00:14:00	14	2.1			
15	S	15:50:00	16:02:00	00:12:00	15	1.8			
14	N	16:06:00	16:19:00	00:13:00	17	1.5			
13	S	16:22:00	16:34:00	00:12:00	17	1.5			
12	N	16:38:00	16:51:00	00:13:00	18	1.3			
11	S	16:55:00	17:08:00	00:13:00	15	1.5			
10	N	17:11:00	17:25:00	00:14:00	15	1.5	Roll warning waypoint 22		
9	S	17:28:00	17:41:00	00:13:00	14	1.4			
8	N	17:45:00	17:58:00	00:13:00	14	1.3			
7	S	18:02:00	18:15:00	00:13:00	12	1.9			
6	N	18:18:00	18:32:00	00:14:00	13	1.8			
5	S	18:36:00	18:49:00	00:13:00	14	1.4	CORS overflight at 18:57		
Page 1						Verify S-Turns After Mission	Yes		
Additional Comments									

Woolpert Lidar Acquisition Log

Project Info						Date		
Project #	Project Name		Unique ID			Flight Date (UTC)	Day of Year	Flight #
79935	FEMA Wyoming Liadar		Day239_90513_A			08/27/2019	239	A
Crew		Equipment			Time			Airports
Pilot		Aircraft Make / Model / Tail #			Hobbs Start	Local Start	UTC Start	Departing
Gebhart		Cessna 404 Titan - N404CP			2366.3	10:02:00	16:02:00	KCPR
Operator		Sensor Make / Model / Serial #			Hobbs End	Local End	UTC End	Arriving
Galambos		Leica Terrain Mapper - 90513			2371.6	13:58:00	19:58:00	KRIW
Wind Dir (°)	Wind Speed (kts)	Visibility (mi)	Ceiling (ft)	Cloud Cover	Temp. (°C)	Dew Point (°C)	Pressure ("Hg)	
70	8	10		Clear	10	4	30.32	
Air Speed (kts)		Altitude AGL (ft)		Altitude MSL (ft)	Airfield Elevation (ft)			
150		11,483		16,453	4,970			
Settings								
Point Spacing (m)	Point Density (ppsm)	Scan Angle/FOV (°)		Scan Frequency (Hz)		Pulse Rate (kHz)	Laser Power (%)	
0.7	2	40		80		670	100	
						Verify S-Turns Before Mission		Yes
Line #	Direction	Start Time (UTC)	End Time (UTC)	Time On-Line	Satellite	PDOP	Line Notes/Comments	
Block 15								
19	N	16:02:27	16:18:55	00:16:28	23	1.2	GPS: 15:01:00	
18	S	16:21:25	16:37:05	00:15:40	24	1.1	Parachute beginning of line	
17	N	16:39:43	16:56:03	00:16:20	25	1		
16	S	16:58:38	17:14:58	00:16:20	22	1.2		
15	N	17:17:34	17:33:48	00:16:14	22	1.2		
14	S	17:36:24	17:52:35	00:16:11	21	1.1		
13	N	17:55:24	18:11:32	00:16:08	20	1.4		
12	S	18:14:14	18:30:11	00:15:57	22	1.2		
11	N	18:32:51	18:49:03	00:16:12	24	1.1	Circles	
Block 10 - Patches								
46	N	19:05:34	19:09:26	00:03:52	20	1.3	UL001 - WPTS 1-10	
33	S	19:14:10	19:18:16	00:04:06	20	1.3	UL002 - 1-16 / circles -	
Over CORS 19:33:37 Circles								
Block 9 - Patches								
42	N	19:47:51	19:09:26	23:21:35	20	1.2	UL001 - WPTS 1-3	
49	S	19:54:44	19:58:22	00:03:38	20	1.2	UL002 - WPTS 18-26	
Circles								
						Verify S-Turns After Mission		Yes

Additional Comments

Woolpert Lidar Acquisition Log

Project Info				Date		
Project #	Project Name	Unique ID	Flight Date (UTC)	Day of Year	Flight #	
79935	FEMA Wyoming Block 12	Day241_90513_A	08/29/2019	241	A	

Crew		Equipment		Time			Airports
Pilot		Aircraft Make / Model / Tail #		Hobbs Start	Local Start	UTC Start	Departing
LaRocque		Cessna 404 Titan - N7079F		2372.2	08:41:00	14:41:00	CPR
Operator		Sensor Make / Model / Serial #		Hobbs End	Local End	UTC End	Arriving
Kennedy		Leica Terrain Mapper - 90513		2378.2	15:10:00	21:10:00	CPR

Conditions							
Wind Dir (°)	Wind Speed (kts)	Visibility (mi)	Ceiling (ft)	Cloud Cover	Temp. (°C)	Dew Point (°C)	Pressure ("Hg)
280	4	10		Clear	15	3	30.2
Air Speed (kts)		Altitude AGL (ft)		Altitude MSL (ft)	Airfield Elevation (ft)		
150		10,663		16,867	5,344		

Settings					
Point Spacing (m)	Point Density (ppsm)	Scan Angle/FOV (°)	Scan Frequency (Hz)	Pulse Rate (kHz)	Laser Power (%)
7	2	40	80	670	100

	Verify S-Turns Before Mission	Yes
--	--------------------------------------	-----

Line #	Direction	Start Time (UTC)	End Time (UTC)	Time On-Line	Satellite	PDOP	Line Notes/Comments
54	S	16:21:00	16:38:00	00:17:00	17	1.2	CORS overflight @ 16:12/ roll warning wypt 60
53	N	16:41:00	16:57:00	00:16:00	17	1.4	
52	S	17:00:00	17:17:00	00:17:00	15	1.4	
51	N	17:20:00	17:36:00	00:16:00	14	1.3	
50	S	17:39:00	17:56:00	00:17:00	18	1.2	
49	N	17:59:00	18:14:00	00:15:00	20	1.3	
48	S	18:18:00	18:34:00	00:16:00	20	1.2	Roll warning waypoint 31
47	N	18:37:00	18:52:00	00:15:00	20	1.2	Roll warning wypt 32, overspeeding on north end
46	S	18:56:00	19:12:00	00:16:00	20	1.3	Roll warning waypoint 36
45	N	19:15:00	19:31:00	00:16:00	20	1.3	
44	S	19:34:00	19:50:00	00:16:00	20	1.3	Roll warning waypoint 23-28
43	N	19:53:00	20:09:00	00:16:00	22	1.2	Roll warning waypoint 7-15, 27, 55 CORS overflight @ 20:17

Page 1	Verify S-Turns After Mission	Yes
--------	-------------------------------------	-----

Additional Comments

Woolpert Lidar Acquisition Log

Project Info						Date		
Project #	Project Name			Unique ID		Flight Date (UTC)	Day of Year	Flight #
79935	FEMA Wyoming Blocks 12			Day243_90515_A		08/31/2019	243	A
Crew		Equipment			Time			Airports
Pilot	Aircraft Make / Model / Tail #			Hobbs Start	Local Start	UTC Start	Departing	
LaRocque	Cessna 404 Titan - N475RC			1928.3	08:05:00	14:05:00	CPR	
Operator	Sensor Make / Model / Serial #			Hobbs End	Local End	UTC End	Arriving	
Kennedy	Leica Terrain Mapper - 90515			1934.1	13:52:00	19:52:00	CPR	
Conditions								
Wind Dir (°)	Wind Speed (kts)	Visibility (mi)	Ceiling (ft)	Cloud Cover	Temp. (°C)	Dew Point (°C)	Pressure ("Hg)	
0	0	10		Clear	14	8	30.23	
Air Speed (kts)		Altitude AGL (ft)		Altitude MSL (ft)	Airfield Elevation (ft)			
150		10,663		16,867	5,344			
Settings								
Point Spacing (m)	Point Density (ppsm)	Scan Angle/FOV (°)		Scan Frequency (Hz)	Pulse Rate (kHz)	Laser Power (%)		
7	2	40		80	670	100		
							Verify S-Turns Before Mission	Yes
Line #	Direction	Start Time (UTC)	End Time (UTC)	Time On-Line	Satellite	PDOP	Line Notes/Comments	
42	S	15:20:00	15:36:00	00:16:00	13	1.6	CORS overflight @ 15:08	
41	N	15:40:00	15:55:00	00:15:00	15	1.5		
40	S	15:59:00	16:15:00	00:16:00	16	1.4		
39	N	16:18:00	16:33:00	00:15:00	14	1.8		
38	S	16:36:00	16:51:00	00:15:00	14	1.8	Roll warning waypoint 56	
37	N	16:55:00	17:09:00	00:14:00	13	2.1	Roll warning waypoint 67	
36	S	17:13:00	17:27:00	00:14:00	13	1.9		
35	N	17:30:00	17:45:00	00:15:00	13	2.3		
34	S	17:49:00	18:03:00	00:14:00	15	1.6		
33	N	18:07:00	18:21:00	00:14:00	15	1.4		
32	S	18:24:00	18:38:00	00:14:00	16	1.4	Roll warning waypoint 106	
31	N	18:42:00	18:56:00	00:14:00	18	1.4	CORS overflight @ 19:07	
Page 1						Verify S-Turns After Mission		Yes
Additional Comments								

Woolpert Lidar Acquisition Log

Project Info						Date		
Project #	Project Name			Unique ID		Flight Date (UTC)	Day of Year	Flight #
79935	Wyoming FEMA Block 12			Day244_90513_A		09/01/2019	244	A
Crew		Equipment			Time			Airports
Pilot	Aircraft Make / Model / Tail #			Hobbs Start	Local Start	UTC Start	Departing	
O'Leary	Cessna 404 Titan - N7079F			2382.3	09:38:00	15:38:00	CPR	
Operator	Sensor Make / Model / Serial #			Hobbs End	Local End	UTC End	Arriving	
Ryan	Leica Terrain Mapper - 90513			2388.1	12:56:00	18:56:00	CPR	
Conditions								
Wind Dir (°)	Wind Speed (kts)	Visibility (mi)	Ceiling (ft)	Cloud Cover	Temp. (°C)	Dew Point (°C)	Pressure ("Hg)	
280	11	10		Clear	16	8	3016	
Air Speed (kts)	Altitude AGL (ft)		Altitude MSL (ft)	Airfield Elevation (ft)				
150	10,663		16,867	5,344				
Settings								
Point Spacing (m)	Point Density (ppsm)	Scan Angle/FOV (°)		Scan Frequency (Hz)	Pulse Rate (kHz)	Laser Power (%)		
0.7		40		82	650	100		
							Verify S-Turns Before Mission	Yes
Line #	Direction	Start Time (UTC)	End Time (UTC)	Time On-Line	Satellite	PDOP	Line Notes/Comments	
17	S	15:38:00	15:52:00	00:14:00	16	1.3		
16	N	15:56:00	16:09:00	00:13:00	17	1.2		
15	S	16:13:00	16:26:00	00:13:00	18	1.1		
14	N	16:30:00	16:44:00	00:14:00	18	1.2		
13	S	16:48:00	17:00:00	00:12:00	17	1.3		
12	N	17:04:00	17:17:00	00:13:00	17	1.3		
11	S	17:20:00	17:33:00	00:13:00	18	1.3		
10	N	17:37:00	17:50:00	00:13:00	18	1.3		
9	S	17:54:00	18:06:00	00:12:00	19	1.2		
8	N	18:10:00	18:23:00	00:13:00	20	1.2		
7	S	18:27:00	18:40:00	00:13:00	20	1.3		
6	N	18:43:00	18:56:00	00:13:00	19	1.3		

Woolpert Lidar Acquisition Log

Project Info						Date		
Project #	Project Name			Unique ID		Flight Date (UTC)	Day of Year	Flight #
79935	FEMA Wyoming Block 12			Day245_90515_A		09/02/2019	245	A
Crew		Equipment			Time			Airports
Pilot	Aircraft Make / Model / Tail #			Hobbs Start	Local Start	UTC Start	Departing	
LaRocque	Cessna 404 Titan - N475RC			1934.1	07:46:00	13:46:00	CPR	
Operator	Sensor Make / Model / Serial #			Hobbs End	Local End	UTC End	Arriving	
Kennedy	Leica Terrain Mapper - 90515			1940.2	13:52:00	19:52:00	CPR	
Conditions								
Wind Dir (°)	Wind Speed (kts)	Visibility (mi)	Ceiling (ft)	Cloud Cover	Temp. (°C)	Dew Point (°C)	Pressure ("Hg)	
230	7	10		Clear	14	-1	30.11	
Air Speed (kts)		Altitude AGL (ft)	Altitude MSL (ft)	Airfield Elevation (ft)				
150		10,663	16,867	5,344				
Settings								
Point Spacing (m)	Point Density (ppsm)	Scan Angle/FOV (°)		Scan Frequency (Hz)	Pulse Rate (kHz)	Laser Power (%)		
7	2	40		80	670	100		
							Verify S-Turns Before Mission	Yes
Line #	Direction	Start Time (UTC)	End Time (UTC)	Time On-Line	Satellite	PDOP	Line Notes/Comments	
30	N	15:02:00	15:17:00	00:15:00	15	1.6	CORS overflight at 14:48	
29	S	15:21:00	15:35:00	00:14:00	16	1.4		
28	N	15:38:00	15:53:00	00:15:00	15	1.5		
27	S	15:56:00	16:11:00	00:15:00	16	1.2		
26	N	16:14:00	16:29:00	00:15:00	15	1.3	Overspeeding on south end	
25	S	16:32:00	16:47:00	00:15:00	14	1.4		
24	N	16:51:00	17:05:00	00:14:00	12	1.6		
23	S	17:08:00	17:23:00	00:15:00	11	2		
5	N	17:29:00	17:41:00	00:12:00	12	1.8		
4	S	17:45:00	17:58:00	00:13:00	13	1.6		
3	N	18:00:00	18:13:00	00:13:00	14	1.5		
2	S	18:17:00	18:29:00	00:12:00	17	1.6		
1	N	18:33:00	18:44:00	00:11:00	17	1.7	CORS overflight at 19:05	
							Verify S-Turns After Mission	Yes

Additional Comments

Woolpert Lidar Acquisition Log

Project Info					Date		
Project #	Project Name		Unique ID		Flight Date (UTC)	Day of Year	Flight #
79935	Wyoming FEMA Block 11		Day207_90513_A		07/26/2019	207	A
Crew		Equipment		Time			Airports
Pilot	Aircraft Make / Model / Tail #		Hobbs Start	Local Start	UTC Start	Departing	
Gebhart	Cessna 404 Titan - N7079F		2268	10:13:00	16:13:00	RIW	
Operator	Sensor Make / Model / Serial #		Hobbs End	Local End	UTC End	Arriving	
Ryan	Leica Terrain Mapper - 90513		2273.8	15:23:00	21:23:00	RIW	
Conditions							
Wind Dir (°)	Wind Speed (kts)	Visibility (mi)	Ceiling (ft)	Cloud Cover	Temp. (°C)	Dew Point (°C)	Pressure ("Hg)
0	0	10	200	Broken	24	3	3026
Air Speed (kts)		Altitude AGL (ft)	Altitude MSL (ft)	Airfield Elevation (ft)			
150		11,483	15,682	5,443			
Settings							
Point Spacing (m)	Point Density (ppsm)	Scan Angle/FOV (°)		Scan Frequency (Hz)	Pulse Rate (kHz)	Laser Power (%)	
0.7		40		80	670	100	
						Verify S-Turns Before Mission	Yes
Line #	Direction	Start Time (UTC)	End Time (UTC)	Time On-Line	Satellite	PDOP	Line Notes/Comments
26	N	16:13:00			16	1.3	N.G. sensor crashed / rebooted
26	S	16:39:00	16:50:00	00:11:00	18	1.1	
25	N	16:53:00	17:04:00	00:11:00	17	1.2	
24	S	17:07:00	17:18:00	00:11:00	19	1.1	
23	N	17:21:00	17:32:00	00:11:00	18	1.3	
22	S	17:34:00	17:45:00	00:11:00	19	1.1	
21	N	17:47:00	17:58:00	00:11:00	19	1.2	
20	S	18:00:00	18:11:00	00:11:00	21	1.1	
19	N	18:13:00	18:24:00	00:11:00	20	1.2	
18	S	18:26:00	18:37:00	00:11:00	21	1.2	
17	N	18:39:00	18:50:00	00:11:00	24	1	
16	S	18:52:00	19:03:00	00:11:00	21	1.1	
15	N	19:05:00	19:16:00	00:11:00	21	1.1	
14	S	19:18:00	19:30:00	00:12:00	22	1.1	
13	N	19:32:00	19:44:00	00:12:00	20	1.2	
12	S	19:45:00	19:57:00	00:12:00	20	1.4	
11	N	20:00:00	20:11:00	00:11:00	20	1.2	
10	S	20:12:00	20:24:00	00:12:00	20	1.3	
9	N	20:26:00	20:37:00	00:11:00	22	1.1	
8	S	20:40:00	20:53:00	00:13:00	23	1.1	
7	N	20:55:00	21:08:00	00:13:00	21	1.1	
6	S	21:10:00	21:23:00	00:13:00	21	1.4	
Page 1						Verify S-Turns After Mission	Yes
Additional Comments							

Woolpert Lidar Acquisition Log

Project Info

Date

Project #	Project Name	Unique ID	Flight Date (UTC)	Day of Year	Flight #
79935	Wyoming FEMA East	Day209_90515_A	07/28/2019	209	A

Crew

Equipment

Time

Airports

Pilot

Aircraft Make / Model / Tail

Hobbs Start

Local Start

UTC Start

Departing

Finn

Cessna 404 Titan - N475RC

1804.8

11:50:00

17:50:00

GCC

Operator

Sensor Make / Model / Serial

Hobbs End

Local End

UTC End

Arriving

DeHart

Leica Terrain Mapper - 90515

1808.6

01:19:00

19:19:00

GCC

Conditions

Wind Dir (°)	Wind Speed (kts)	Visibility (mi)	Ceiling (ft)	Cloud Cover	Temp. (°C)	Dew Point (°C)	Pressure ("Hg)
340	12	10	12,000	Clear	24	7	30.14

Air Speed (kts)

Altitude AGL (ft)

Altitude MSL (ft)

Airfield Elevation (ft)

150

14,000

14,000

5,350

Settings

Point Spacing (m)	Point Density (ppsm)	Scan Angle/FOV (°)	Scan Frequency (Hz)	Pulse Rate (kHz)	Laser Power (%)
0.35	10	40	81	600	100

Verify S-Turns Before Mission

Yes

Line #	Direction	Start Time (UTC)	End Time (UTC)	Time On-Line	Satellite	PDOP	Line Notes/Comments
1	S	17:50:00	18:05:00	00:15:00	15	1.4	Area 11
1	N	18:09:00	18:12:00	00:03:00	15	1.5	Reflight for roll on south end
2	N	18:17:00	18:30:00	00:13:00	15	1.3	
3	S	18:33:00	18:46:00	00:13:00	16	1.2	
4	N	18:50:00	19:03:00	00:13:00	14	1.7	
5	S	19:06:00	19:19:00	00:13:00	17	1.6	

Additional Comments

Woolpert Lidar Acquisition Log

Project Info

Date

Project #	Project Name	Unique ID	Flight Date (UTC)	Day of Year	Flight #
79935	Wyoming FEMA East	Day215_90515_A	08/03/2019	215	A

Crew	Equipment	Time			Airports
Pilot	Aircraft Make / Model / Tail #	Hobbs Start	Local Start	UTC Start	Departing
Finn	Cessna 404 Titan - N475RC	1816.1	10:07:00	16:07:00	RWI
Operator	Sensor Make / Model / Serial #	Hobbs End	Local End	UTC End	Arriving
DeHart	Leica Terrain Mapper - 90515	1820.4	01:20:00	19:20:00	GCC

Conditions

Wind Dir (°)	Wind Speed (kts)	Visibility (mi)	Ceiling (ft)	Cloud Cover	Temp. (°C)	Dew Point (°C)	Pressure ("Hg)
20	16	10	12,000	Clear	23	8	30.25
Air Speed (kts)		Altitude AGL (ft)		Altitude MSL (ft)		Airfield Elevation (ft)	
150		14,000		14,000		5,350	

Settings

Point Spacing (m)	Point Density (ppsm)	Scan Angle/FOV (°)	Scan Frequency (Hz)	Pulse Rate (kHz)	Laser Power (%)
0.35	10	40	81	600	100

Verify S-Turns Before Mission Yes

Line #	Direction	Start Time (UTC)	End Time (UTC)	Time On-Line	Satellite	PDOP	Line Notes/Comments
9	N	16:07:00	16:11:00	00:04:00	12	1.7	Area 5
10	S	16:14:00	16:18:00	00:04:00	12	1.7	
11	N	16:20:00	16:24:00	00:04:00	12	1.7	
12	S	16:27:00	16:31:00	00:04:00	12	1.5	
13	N	16:34:00	16:39:00	00:05:00	12	1.5	
72	S	17:09:00	17:23:00	00:14:00	11	1.6	Area 10
71	N	17:27:00	17:42:00	00:15:00	13	1.5	
70	S	17:45:00	18:00:00	00:15:00	12	1.5	
69	N	18:04:00	18:21:00	00:17:00	14	1.2	
68	S	18:24:00	18:41:00	00:17:00	14	1.5	
67	N	18:44:00	19:01:00	00:17:00	14	1.5	
66	S	19:04:00	19:20:00	00:16:00	13	1.5	Clouds at southern end

Page 1

Verify S-Turns After Mission Yes

Additional Comments

Woolpert Lidar Acquisition Log

Project Info					Date		
Project #	Project Name	Unique ID	Flight Date (UTC)	Day of Year	Flight #		
79935	Wyoming FEMA Block 16	Day217_90513_A	08/04/2019	217	A		
Crew		Equipment		Time			Airports
Pilot	Aircraft Make / Model / Tail #	Hobbs Start	Local Start	UTC Start	Departing		
Sanda	Cessna 404 Titan - N7079F	2285.8	09:46:00	15:46:00	RIW		
Operator	Sensor Make / Model / Serial #	Hobbs End	Local End	UTC End	Arriving		
Ryan	Leica Terrain Mapper - 90513	2290.7	14:01:00	20:01:00	RIW		
Conditions							
Wind Dir (°)	Wind Speed (kts)	Visibility (mi)	Ceiling (ft)	Cloud Cover	Temp. (°C)	Dew Point (°C)	Pressure ("Hg)
0	0	10	150	Scattered	22	11	3027
Air Speed (kts)		Altitude AGL (ft)	Altitude MSL (ft)	Airfield Elevation (ft)			
150		11,483	16,204	5,443			
Settings							
Point Spacing (m)	Point Density (ppsm)	Scan Angle/FOV (°)	Scan Frequency (Hz)	Pulse Rate (kHz)	Laser Power (%)		
0.7		40	80	670	100		
						Verify S-Turns Before Mission	Yes
Line #	Direction	Start Time (UTC)	End Time (UTC)	Time On-Line	Satellite	PDOP	Line Notes/Comments
31	S	15:46:00	16:02:00	00:16:00	18	1.3	
30	N	16:06:00	16:22:00	00:16:00	19	1.2	
29	S	16:26:00	16:42:00	00:16:00	22	1.1	
28	N	16:45:00	17:01:00	00:16:00	20	1.4	
27	S	17:04:00	17:21:00	00:17:00	21	1.3	
26	N	17:24:00	17:40:00	00:16:00	22	1.2	
25	S	17:43:00	17:59:00	00:16:00	20	1.3	
24	N	18:02:00	18:18:00	00:16:00	23	1	
23	S	18:21:00	18:37:00	00:16:00	20	1.2	
22	N	18:40:00	18:57:00	00:17:00	21	1.1	
1	S	19:06:00	19:22:00	00:16:00	18	1.2	
2	N	19:25:00	19:41:00	00:16:00	19	1.3	
3	S	19:44:00	20:01:00	00:17:00	21	1.1	
Page 1					Verify S-Turns After Mission		Yes
Additional Comments							

Additional Comments

Woolpert Lidar Acquisition Log

Project Info			Date		
Project #	Project Name	Unique ID	Flight Date (UTC)	Day of Year	Flight #
79935	Wyoming FEMA Block 16	Day218_90513_A	08/06/2019	218	A

Crew	Equipment	Time			Airports
Pilot	Aircraft Make / Model / Tail #	Hobbs Start	Local Start	UTC Start	Departing
Sanda	Cessna 404 Titan - N7079F	2291.3	11:20:00	17:20:00	RIW
Operator	Sensor Make / Model / Serial #	Hobbs End	Local End	UTC End	Arriving
Ryan	Leica Terrain Mapper - 90513	2295.6	14:32:00	20:32:00	RIW

Conditions							
Wind Dir (°)	Wind Speed (kts)	Visibility (mi)	Ceiling (ft)	Cloud Cover	Temp. (°C)	Dew Point (°C)	Pressure ("Hg)
90	15	10	200	Scattered	31	10	3012
Air Speed (kts)	Altitude AGL (ft)	Altitude MSL (ft)	Airfield Elevation (ft)				
150	11,483	16,204	5,443				

Settings					
Point Spacing (m)	Point Density (ppsm)	Scan Angle/FOV (°)	Scan Frequency (Hz)	Pulse Rate (kHz)	Laser Power (%)
0.7		40	80	670	100

					Verify S-Turns Before Mission	Yes
--	--	--	--	--	-------------------------------	-----

Line #	Direction	Start Time (UTC)	End Time (UTC)	Time On-Line	Satellite	PDOP	Line Notes/Comments
4	N	17:20:00	17:37:00	00:17:00	21	1.2	
5	S	17:40:00	17:56:00	00:16:00	21	1.1	
6	N	17:59:00	18:16:00	00:17:00	23	1	
7	S	18:18:00	18:36:00	00:18:00	20	1.2	
8	N	18:38:00	18:55:00	00:17:00	19	1.2	
9	S	18:58:00	19:15:00	00:17:00	17	1.2	
10	N	19:17:00	19:34:00	00:17:00	19	1.4	
11	S	19:37:00	19:55:00	00:18:00	22	1.2	
12	N	19:57:00	20:13:00	00:16:00	23	1.3	
13	S	20:16:00	20:32:00	00:16:00	22	1.4	

Page 1					Verify S-Turns After Mission	Yes
--------	--	--	--	--	------------------------------	-----

Additional Comments

Woolpert Lidar Acquisition Log

Project Info						Date		
Project #	Project Name		Unique ID		Flight Date (UTC)	Day of Year	Flight #	
79935	Wyoming FEMA East		Day220_90515_A		08/08/2019	220	A	
Crew		Equipment			Time			Airports
Pilot		Aircraft Make / Model / Tail #			Hobbs Start	Local Start	UTC Start	Departing
Gilbero		Cessna 404 Titan - N475RC			1822.2	08:43:00	14:43:00	RIW
Operator		Sensor Make / Model / Serial #			Hobbs End	Local End	UTC End	Arriving
DeHart		Leica Terrain Mapper - 90515			1826.9	12:25:00	18:25:00	RIW
Conditions								
Wind Dir (°)	Wind Speed (kts)	Visibility (mi)	Ceiling (ft)	Cloud Cover	Temp. (°C)	Dew Point (°C)	Pressure ("Hg)	
280	12	10	12,000	Broken	17	10	30.12	
Air Speed (kts)		Altitude AGL (ft)	Altitude MSL (ft)	Airfield Elevation (ft)				
150		14,000	14,000	5,512				
Settings								
Point Spacing (m)	Point Density (ppsm)	Scan Angle/FOV (°)		Scan Frequency (Hz)	Pulse Rate (kHz)	Laser Power (%)		
0.35	10	40		81	600	100		
							Verify S-Turns Before Mission	Yes
Line #	Direction	Start Time (UTC)	End Time (UTC)	Time On-Line	Satellite	PDOP	Line Notes/Comments	
18	N	14:43:00	14:54:00	00:11:00	14	1.5	Area 5	
17	S	14:57:00	15:07:00	00:10:00	14	1.5		
16	N	15:12:00	15:19:00	00:07:00	12	1.7		
15	S	15:22:00	15:28:00	00:06:00	11	1.8		
14	N	15:31:00	15:38:00	00:07:00	11	1.8		
65	S	16:09:00	16:26:00	00:17:00	11	1.5	Area 10	
64	N	16:29:00	16:46:00	00:17:00	11	2		
63	S	16:49:00	17:05:00	00:16:00	14	1.7		
62	N	17:09:00	17:25:00	00:16:00	14	1.7		
61	S	17:29:00	17:46:00	00:17:00	15	1.7		
60	N	17:49:00	18:06:00	00:17:00	16	1.8		
59	S	18:09:00	18:25:00	00:16:00	17	1.6		
							Verify S-Turns After Mission	Yes
Additional Comments								

Woolpert Lidar Acquisition Log

Project Info					Date			
Project #	Project Name		Unique ID		Flight Date (UTC)	Day of Year	Flight #	
79935	Wyoming FEMA Block 16		Day221_90513_A		08/09/2019	221	A	
Crew		Equipment		Time			Airports	
Pilot	Aircraft Make / Model / Tail #			Hobbs Start	Local Start	UTC Start	Departing	
Sanda	Cessna 404 Titan - N7079F			2298.6	09:14:00	15:14:00	CPR	
Operator	Sensor Make / Model / Serial #			Hobbs End	Local End	UTC End	Arriving	
Ryan	Leica Terrain Mapper - 90513			2303	11:43:00	17:43:00	RIW	
Conditions								
Wind Dir (°)	Wind Speed (kts)	Visibility (mi)	Ceiling (ft)	Cloud Cover	Temp. (°C)	Dew Point (°C)	Pressure ("Hg)	
210	7	10	180	Scattered	19	11	3009	
Air Speed (kts)		Altitude AGL (ft)	Altitude MSL (ft)	Airfield Elevation (ft)				
150		11,483	16,204	5,443				
Settings								
Point Spacing (m)	Point Density (ppsm)	Scan Angle/FOV (°)		Scan Frequency (Hz)	Pulse Rate (kHz)	Laser Power (%)		
0.7		40		80	670	100		
							Verify S-Turns Before Mission	Yes
Line #	Direction	Start Time (UTC)	End Time (UTC)	Time On-Line	Satellite	PDOP	Line Notes/Comments	
14	S	15:14:00	15:30:00	00:16:00	15	1.4		
15	N	15:33:00	15:49:00	00:16:00	15	1.4		
16	S	15:52:00	16:08:00	00:16:00	15	1.4		
17	N	16:10:00	16:26:00	00:16:00	18	1.1		
18	S	16:29:00	16:45:00	00:16:00	15	1.4		
19	N	16:49:00	17:05:00	00:16:00	17	1.2		
20	S	17:07:00	17:24:00	00:17:00	18	1.2		
21	N	17:27:00	17:43:00	00:16:00	19	1.1		
Page 1					Verify S-Turns After Mission			Yes
Additional Comments								

Woolpert Lidar Acquisition Log

Project Info						Date		
Project #	Project Name		Unique ID		Flight Date (UTC)	Day of Year	Flight #	
79935	Wyoming FEMA East		Day221_90515_A		08/09/2019	221	A	
Crew		Equipment			Time			Airports
Pilot		Aircraft Make / Model / Tail #			Hobbs Start	Local Start	UTC Start	Departing
Gilbero		Cessna 404 Titan - N475RC			1828.2	09:05:00	15:05:00	RIW
Operator		Sensor Make / Model / Serial #			Hobbs End	Local End	UTC End	Arriving
DeHart		Leica Terrain Mapper - 90515			1832.2	11:49:00	17:49:00	RIW
Conditions								
Wind Dir (°)	Wind Speed (kts)	Visibility (mi)	Ceiling (ft)	Cloud Cover	Temp. (°C)	Dew Point (°C)	Pressure ("Hg)	
250	7	10	12,000	Broken	17	12	30.08	
Air Speed (kts)		Altitude AGL (ft)		Altitude MSL (ft)		Airfield Elevation (ft)		
150		14,000		14,000		5,512		
Settings								
Point Spacing (m)	Point Density (ppsm)	Scan Angle/FOV (°)		Scan Frequency (Hz)		Pulse Rate (kHz)	Laser Power (%)	
0.35	10	40		81		600	100	
						Verify S-Turns Before Mission	Yes	
Line #	Direction	Start Time (UTC)	End Time (UTC)	Time On-Line	Satellite	PDOP	Line Notes/Comments	
58	N	15:05:00	15:21:00	00:16:00	13	1.5	Area 10	
57	S	15:25:00	15:41:00	00:16:00	12	1.6		
56	N	15:45:00	16:01:00	00:16:00	11	1.9		
55	S	16:05:00	16:22:00	00:17:00	13	1.5		
35	S	16:35:00	16:51:00	00:16:00	11	1.6	Block 15	
34	N	16:55:00	17:11:00	00:16:00	11	1.7		
33	S	17:14:00	17:31:00	00:17:00	11	1.6		
32	N	17:34:00	17:49:00	00:15:00	13	1.3		
Page 1						Verify S-Turns After Mission	Yes	
Additional Comments								

Woolpert Lidar Acquisition Log

Project Info				Date			
Project #	Project Name	Unique ID	Flight Date (UTC)	Day of Year	Flight #		
79935	Wyoming FEMA East	Day222_90515_A	08/10/2019	222	A		
Crew		Equipment		Time			Airports
Pilot	Aircraft Make / Model / Tail #		Hobbs Start	Local Start	UTC Start	Departing	
Gilbero	Cessna 404 Titan - N475RC		1832.2	09:16:00	15:16:00	RIW	
Operator	Sensor Make / Model / Serial #		Hobbs End	Local End	UTC End	Arriving	
DeHart	Leica Terrain Mapper - 90515		18.36.7	12:04:00	18:04:00	CPR	

Conditions							
Wind Dir (°)	Wind Speed (kts)	Visibility (mi)	Ceiling (ft)	Cloud Cover	Temp. (°C)	Dew Point (°C)	Pressure ("Hg)
300	9	10	12,000	Broken	15	5	30.12
Air Speed (kts)		Altitude AGL (ft)	Altitude MSL (ft)	Airfield Elevation (ft)			
150		14,000	14,000	5,512			

Settings					
Point Spacing (m)	Point Density (ppsm)	Scan Angle/FOV (°)	Scan Frequency (Hz)	Pulse Rate (kHz)	Laser Power (%)
0.35	10	40	81	600	100

							Verify S-Turns Before Mission	Yes
Line #	Direction	Start Time (UTC)	End Time (UTC)	Time On-Line	Satellite	PDOP	Line Notes/Comments	
54	N	15:16:00	15:32:00	00:16:00	12	1.7	Area 10	
53	S	15:36:00	15:52:00	00:16:00	12	1.5		
52	N	15:55:00	16:12:00	00:17:00	13	1.5		
51	S	16:16:00	16:32:00	00:16:00	15	1.3		
50	N	16:36:00	16:52:00	00:16:00	13	1.6		
49	S	16:55:00	17:11:00	00:16:00	13	1.4		
48	N	17:15:00	17:31:00	00:16:00	12	1.5		
47	S	17:35:00	17:49:00	00:14:00	14	1.2		
46	N	17:52:00	18:04:00	00:12:00	12	1.7	Clouds at north end of line	

Additional Comments

Woolpert Lidar Acquisition Log

Project Info				Date		
Project #	Project Name	Unique ID	Flight Date (UTC)	Day of Year	Flight #	
79935	FEMA Wyoming block 10	Day225_90515_A	08/13/2019	225	A	

Crew	Equipment	Time			Airports
Pilot	Aircraft Make / Model / Tail #	Hobbs Start	Local Start	UTC Start	Departing
Gibilaro	Cessna 404 Titan - N475RC	1844.8	09:00:00	15:00:00	RIW
Operator	Sensor Make / Model / Serial #	Hobbs End	Local End	UTC End	Arriving
Kennedy	Leica Terrain Mapper - 90515	1849.7	13:54:00	19:54:00	RIW

Conditions							
Wind Dir (°)	Wind Speed (kts)	Visibility (mi)	Ceiling (ft)	Cloud Cover	Temp. (°C)	Dew Point (°C)	Pressure ("Hg)
0	0	10		Clear	17	6	30.3
Air Speed (kts)	Altitude AGL (ft)	Altitude MSL (ft)	Airfield Elevation (ft)				
150	11,483	16,319	5,516				

Settings					
Point Spacing (m)	Point Density (ppsm)	Scan Angle/FOV (°)	Scan Frequency (Hz)	Pulse Rate (kHz)	Laser Power (%)
0.7	2	40	80	670	100

	Verify S-Turns Before Mission	Yes
--	-------------------------------	-----

Line #	Direction	Start Time (UTC)	End Time (UTC)	Time On-Line	Satellite	PDOP	Line Notes/Comments
27	N	15:31:00	15:41:00	00:10:00	14	1.6	
26	S	15:45:00	15:55:00	00:10:00	15	1.8	
25	N	15:59:00	16:09:00	00:10:00	16	1.5	
24	S	16:12:00	16:22:00	00:10:00	14	1.8	
23	N	16:26:00	16:36:00	00:10:00	15	1.6	
22	S	16:39:00	16:49:00	00:10:00	17	1.4	
21	N	16:54:00	17:04:00	00:10:00	18	1.4	
20	S	17:07:00	17:17:00	00:10:00	17	1.5	
19	N	17:21:00	17:31:00	00:10:00	18	1.2	overexposure waypoint 14
18	S	17:34:00	17:44:00	00:10:00	15	1.7	
17	N	17:48:00	17:58:00	00:10:00	15	1.7	
16	S	18:02:00	18:12:00	00:10:00	16	1.6	
15	N	18:16:00	18:26:00	00:10:00	14	2.1	
14	S	18:30:00	18:40:00	00:10:00	13	1.9	
13	N	18:43:00	18:53:00	00:10:00	15	1.5	Roll warning waypoint 25
12	S	18:57:00	19:09:00	00:12:00	14	1.8	Clouds waypoints 42-45
11	N	19:12:00	19:22:00	00:10:00	16	1.4	
10	S	19:25:00	19:35:00	00:10:00	18	1.5	Roll warning waypoint 27-28

Page 1	Verify S-Turns After Mission	Yes
--------	------------------------------	-----

Additional Comments

Woolpert Lidar Acquisition Log

Project Info						Date			
Project #	Project Name			Unique ID		Flight Date (UTC)	Day of Year	Flight #	
79935	WY FEMA East LiDAR Block 6RF's Block 15			Day226_90511_A		08/14/2019	226	A	
Crew		Equipment			Time			Airports	
Pilot		Aircraft Make / Model / Tail #			Hobbs Start	Local Start	UTC Start	Departing	
Costanzo		Cessna 404 Titan - N404CP			7335.2	09:35:00	15:35:00	GTF	
Operator		Sensor Make / Model / Serial #			Hobbs End	Local End	UTC End	Arriving	
Denham		Leica Terrain Mapper - 90511			7341.8	03:51:00	21:51:00	CPR	
Conditions									
Wind Dir (°)	Wind Speed (kts)	Visibility (mi)	Ceiling (ft)	Cloud Cover	Temp. (°C)	Dew Point (°C)	Pressure ("Hg)		
230	6	10		Clear	17	8	30.15		
Air Speed (kts)		Altitude AGL (ft)	Altitude MSL (ft)	Airfield Elevation (ft)					
150			16,300	5,443					
Settings									
Point Spacing (m)	Point Density (ppsm)	Scan Angle/FOV (°)		Scan Frequency (Hz)	Pulse Rate (kHz)		Laser Power (%)		
		40		80	670		100		
								Verify S-Turns Before Mission	Yes
Line #	Direction	Start Time (UTC)	End Time (UTC)	Time On-Line	Satellite	PDOP	Line Notes/Comments		
13	S	17:38:00			23	1.2	BLK 21 - Aborted - Cloud Bank		
40	N	17:53:00	18:09:00	00:16:00	25	1.2	BLK 16 RF		
33	S	18:14:00	18:30:00	00:16:00	22	1.2	BLK 16 RF		
31	N	18:47:00	19:03:00	00:16:00	20	1.4	BLK 15		
30	S	19:07:00	19:23:00	00:16:00	22	1.2	BLK 15		
29	N	19:27:00	19:43:00	00:16:00	22	1.3	BLK 15		
28	S	19:45:00	20:03:00	00:18:00	22	1.2	BLK 15 - Mount Pitch 19:47		
27	N	20:06:00	20:24:00	00:18:00	21	1.3	BLK 15		
26	S	20:27:00	20:44:00	00:17:00	21	1.2	BLK 15 - Mount Roll 20:28/Mount Pitch 20:44		
25	N	20:47:00	21:04:00	00:17:00	21	1.3	BLK 15 - In Cloud 21:04		
24	S	21:07:00	21:24:00	00:17:00	19	1.3	BLK 15 21:09 In Cloud		
Page 1						Verify S-Turns After Mission		Yes	
Additional Comments									
BLOCK 16 ReFlights. BLOCK 15. Refer to N475RC's Base Log. KRIW.									

Woolpert Lidar Acquisition Log

Project Info						Date		
Project #	Project Name			Unique ID		Flight Date (UTC)	Day of Year	Flight #
79935	FEMA Wyoming Liadar			Day228_90513_A		08/16/2019	228	A
Crew		Equipment			Time			Airports
Pilot	Aircraft Make / Model / Tail #			Hobbs Start	Local Start	UTC Start	Departing	
Gebhart	Cessna 404 Titan - N404CP			2311.9	10:35:00	16:35:00	KCPR	
Operator	Sensor Make / Model / Serial #			Hobbs End	Local End	UTC End	Arriving	
Galambos	Leica Terrain Mapper - 90513			2317.7	15:00:00	21:00:00	KRIW	
Conditions								
Wind Dir (°)	Wind Speed (kts)	Visibility (mi)	Ceiling (ft)	Cloud Cover	Temp. (°C)	Dew Point (°C)	Pressure ("Hg)	
250	6	10		Clear	16	9	30.08	
Air Speed (kts)		Altitude AGL (ft)	Altitude MSL (ft)	Airfield Elevation (ft)				
150		11,483	17,159	5,302				
Settings								
Point Spacing (m)	Point Density (ppsm)	Scan Angle/FOV (°)		Scan Frequency (Hz)	Pulse Rate (kHz)	Laser Power (%)		
0.7	2	40		80	670	100		
							Verify S-Turns Before Mission	Yes
Line #	Direction	Start Time (UTC)	End Time (UTC)	Time On-Line	Satellite	PDOP	Line Notes/Comments	
							Block 14/GPS 15:25:25	
							Takeoff: 1535z	
30	S	16:35:00	16:51:09	00:16:09	18	1.3	wpts 40-44 clou	
29	N	16:53:57	17:10:00	00:16:03	18	1.3		
28	S	17:12:30	17:28:18	00:15:48	20	1		
27	N	17:31:07	17:47:31	00:16:24	19	1.2	3-6, 37-38	
26	S	17:50:08	18:06:20	00:16:12	19	1.2	30-32	
							reflight and patches	
31	N	18:19:00	18:21:24	00:02:24	17	1.2	SEVEN thry 15	
32	S	18:24:03	18:25:31	00:01:28	17	1.2	nine thru 12	
33	N	18:28:12	18:29:53	00:01:41	17	1.2	eight thru 11	
34	S	18:32:54	18:34:05	00:01:11	18	1.3	13,14	
38	N	18:38:16	18:39:49	00:01:33	18	1.3	1,2,3,4	
39	S	18:42:03	18:43:18	00:01:15	18	1.3	1,2,3	
39	S	18:49:08	18:50:00	00:00:52	18	1.3	39	
37	N	18:53:12	18:53:40	00:00:28	20	1.3	44	
36	S	18:55:57	18:57:13	00:01:16	20	1.3	41-44/ refly the reflight clouds	
6	N	19:07:31	19:09:00	00:01:29	20	1.3	9,10,11,12	
5	S	19:11:49	19:14:13	00:02:24	22	1.2	9,10,11,12	
4	N	19:16:37	19:19:53	00:03:16	24	1.2	One thru 12/ UL13	
40	S	19:45:28	19:58:15	00:12:47	26	1.3	Block 20	
39	N	20:01:07	20:13:28	00:12:21	23	1.2		
38	S	20:16:04	20:58:43	00:42:39	24	1.2	wind 258 at 44kts	
37	N	20:31:18	20:43:52	00:12:34	20	1.3		
36	S	20:46:31	20:59:25	00:12:54	20	1.3		
Page 1						Verify S-Turns After Mission		Yes
Additional Comments								

Woolpert Lidar Acquisition Log

Project Info						Date			
Project #	Project Name			Unique ID		Flight Date (UTC)	Day of Year	Flight #	
79935	FEMA Wyoming Blocks 14 & 21			Day228_90515_A		08/16/2019	228	A	
Crew		Equipment			Time			Airports	
Pilot	Aircraft Make / Model / Tail #			Hobbs Start	Local Start	UTC Start	Departing		
Gibilaro	Cessna 404 Titan - N475RC			1859.9	08:42:00	14:42:00	RIW		
Operator	Sensor Make / Model / Serial #			Hobbs End	Local End	UTC End	Arriving		
Kennedy	Leica Terrain Mapper - 90515			1865.1	13:51:00	19:51:00	CPR		
Conditions									
Wind Dir (°)	Wind Speed (kts)	Visibility (mi)	Ceiling (ft)	Cloud Cover	Temp. (°C)	Dew Point (°C)	Pressure ("Hg)		
40	3	10		Clear	15	8	30.1		
Air Speed (kts)		Altitude AGL (ft)	Altitude MSL (ft)	Airfield Elevation (ft)					
150		11,483	17,159	5,516					
Settings									
Point Spacing (m)	Point Density (ppsm)	Scan Angle/FOV (°)		Scan Frequency (Hz)	Pulse Rate (kHz)	Laser Power (%)			
7	2	40		80	670	100			
						Verify S-Turns Before Mission	Yes		
Line #	Direction	Start Time (UTC)	End Time (UTC)	Time On-Line	Satellite	PDOP	Line Notes/Comments		
7	S	15:10:00	15:26:00	00:16:00	10	1.9			
8	N	15:29:00	15:45:00	00:16:00	10	1.9	few clouds below		
9	S	15:49:00	16:05:00	00:16:00	10	1.5	few clouds below		
10	N	16:08:00	16:24:00	00:16:00	11	1.5	few clouds below		
13	S	16:48:00	17:00:00	00:12:00	14	1.5	Start Block 21		
14	N	17:05:00	17:17:00	00:12:00	14	1.5			
15	S	17:21:00	17:33:00	00:12:00	13	1.6			
16	N	17:39:00	17:51:00	00:12:00	13	1.5			
17	S	17:56:00	18:08:00	00:12:00	14	1.3			
18	N	18:12:00	18:24:00	00:12:00	12	1.3			
19	S	18:29:00	18:41:00	00:12:00	10	1.6			
20	N	18:45:00	18:57:00	00:12:00	11	2			
							Base overflight @ 19:17		
						Verify S-Turns After Mission		Yes	

Additional Comments

Woolpert Lidar Acquisition Log

Project Info						Date		
Project #	Project Name			Unique ID		Flight Date (UTC)	Day of Year	Flight #
79935	FEMA Wyoming Liadar			Day229_90513_A		08/17/2019	229	A
Crew		Equipment			Time			Airports
Pilot	Aircraft Make / Model / Tail #			Hobbs Start	Local Start	UTC Start	Departing	
Gebhart	Cessna 404 Titan - N404CP			2318.3	09:44:00	15:44:00	KCPR	
Operator	Sensor Make / Model / Serial #			Hobbs End	Local End	UTC End	Arriving	
Galambos	Leica Terrain Mapper - 90513			2324.3	15:10:00	20:10:00	KRIW	
Conditions								
Wind Dir (°)	Wind Speed (kts)	Visibility (mi)	Ceiling (ft)	Cloud Cover	Temp. (°C)	Dew Point (°C)	Pressure ("Hg)	
210	9	10		Clear	16	3	29.91	
Air Speed (kts)		Altitude AGL (ft)	Altitude MSL (ft)	Airfield Elevation (ft)				
150		10,663	17,477	5,302				
Settings								
Point Spacing (m)	Point Density (ppsm)	Scan Angle/FOV (°)		Scan Frequency (Hz)	Pulse Rate (kHz)	Laser Power (%)		
0.7	2	40		82	650	100		
							Verify S-Turns Before Mission	Yes
Line #	Direction	Start Time (UTC)	End Time (UTC)	Time On-Line	Satellite	PDOP	Line Notes/Comments	
28	S	15:44:21	16:00:41	00:16:20	21	1.1	Block 13/Takeoff: 1432z/gps 14:22:00	
27	N	16:03:00	16:19:32	00:16:32	18			
26	S	16:22:40	16:38:57	00:16:17	20	1.3		
25	N	16:41:22	16:58:00	00:16:38	19	1.3		
24	S	17:00:35	17:17:05	00:16:30	19	1.2		
23	N	17:19:30	17:36:07	00:16:37	19	1.2		
22	S	17:17:08	17:55:44	00:38:36	19	1.2		
21	N	17:58:22	18:14:42	00:16:20	19	1.2		
21	N	18:19:16			19	1.2	manual--confusion with the CCNS reboot	
20	S	18:26:00	18:41:50	00:15:50	19	1.2		
19	N	18:45:48	19:02:07	00:16:19	19	1.2		
18	S	19:05:03	19:20:55	00:15:52	22	1.1		
17	N	19:23:15	19:39:23	00:16:08	22	1.1		
16	S	19:42:08	19:58:09	00:16:01	22	1.1		
15	N	20:00:30	20:10:10	00:09:40	22	1.2	The Lidar detected a laser safety fault condition red alert circles and fly over the base	
							Verify S-Turns After Mission	Yes
Additional Comments								

Woolpert Lidar Acquisition Log

Project Info						Date			
Project #	Project Name			Unique ID		Flight Date (UTC)	Day of Year	Flight #	
79935	FEMA Wyoming Blocks 14 & 19			Day229_90515_A		08/17/2019	229	A	
Crew		Equipment			Time			Airports	
Pilot	Aircraft Make / Model / Tail #			Hobbs Start	Local Start	UTC Start	Departing		
Gibilaro	Cessna 404 Titan - N475RC			1865.7	08:30:00	14:30:00	RIW		
Operator	Sensor Make / Model / Serial #			Hobbs End	Local End	UTC End	Arriving		
Kennedy	Leica Terrain Mapper - 90515			1871.1	14:02:00	20:02:00	CPR		
Conditions									
Wind Dir (°)	Wind Speed (kts)	Visibility (mi)	Ceiling (ft)	Cloud Cover	Temp. (°C)	Dew Point (°C)	Pressure ("Hg)		
280	9	10		Clear	17	1	29.91		
Air Speed (kts)		Altitude AGL (ft)	Altitude MSL (ft)	Airfield Elevation (ft)					
150		11,483	17,159	5,516					
Settings									
Point Spacing (m)	Point Density (ppsm)	Scan Angle/FOV (°)		Scan Frequency (Hz)	Pulse Rate (kHz)	Laser Power (%)			
7	2	40		80	670	100			
						Verify S-Turns Before Mission	Yes		
Line #	Direction	Start Time (UTC)	End Time (UTC)	Time On-Line	Satellite	PDOP	Line Notes/Comments		
11	S	15:10:00	15:26:00	00:16:00	14	1.9			
12	N	15:29:00	15:45:00	00:16:00	16	1.5			
13	S	15:49:00	16:05:00	00:16:00	12	2.2			
14	N	16:09:00	16:25:00	00:16:00	14	1.4			
15	S	16:31:00	16:47:00	00:16:00	14	1.4			
16	N	16:51:00	17:07:00	00:16:00	15	1.2			
17	S	17:11:00	17:27:00	00:16:00	14	1.3			
18	N	17:31:00	17:47:00	00:16:00	13	1.4			
19	S	17:53:00	18:09:00	00:16:00	14	1.4			
40	S	18:19:00	18:31:00	00:12:00	11	1.9	Start Block 19		
39	N	18:36:00	18:49:00	00:13:00	11	1.8			
38	S	18:52:00	19:05:00	00:13:00	12	1.4			
37	N	19:09:00	19:22:00	00:13:00	14	1.5			
							Base overflight at 19:33		
						Verify S-Turns After Mission	Yes		

Additional Comments

Woolpert Lidar Acquisition Log

Project Info						Date			
Project #	Project Name		Unique ID			Flight Date (UTC)	Day of Year	Flight #	
79935	FEMA Wyoming Lidar		Day231_90513_A			08/19/2019	231	A	
Crew		Equipment			Time			Airports	
Pilot	Aircraft Make / Model / Tail #			Hobbs Start	Local Start	UTC Start	Departing		
Gebhart	Cessna 404 Titan - N404CP			2332.3	09:49:00	15:49:00	KCPR		
Operator	Sensor Make / Model / Serial #			Hobbs End	Local End	UTC End	Arriving		
Galambos	Leica Terrain Mapper - 90513			2337.9	14:04:00	20:04:00	KRIW		
Conditions									
Wind Dir (°)	Wind Speed (kts)	Visibility (mi)	Ceiling (ft)	Cloud Cover	Temp. (°C)	Dew Point (°C)	Pressure ("Hg)		
		10		Clear	21	-1	30.08		
Air Speed (kts)		Altitude AGL (ft)	Altitude MSL (ft)	Airfield Elevation (ft)					
150		10,663	17,444	6,781					
Settings									
Point Spacing (m)	Point Density (ppsm)	Scan Angle/FOV (°)		Scan Frequency (Hz)	Pulse Rate (kHz)	Laser Power (%)			
0.7	2	40		82	650	100			
						Verify S-Turns Before Mission	Yes		
Line #	Direction	Start Time (UTC)	End Time (UTC)	Time On-Line	Satellite	PDOP	Line Notes/Comments		
							Block 13/Takeoff: 14:37z/gps 14:47:30		
							Wind Var 4		
1	S	15:49:36	16:03:03	00:13:27	18	1.4	Block 19		
2	N	16:05:16	16:18:11	00:12:55	20	1.2			
3	S	16:21:00	16:34:52	00:13:52	20	1.2			
4	N	16:37:22	16:50:11	00:12:49	20	1.2			
5	S	16:53:10	17:06:53	00:13:43	22	1.1			
6	N	17:09:00	17:21:44	00:12:44	22	1			
7	S	17:24:57	17:38:30	00:13:33	21	1.1			
8	N	17:40:53	17:53:45	00:12:52	21	1.1			
9	S	17:56:50	18:10:08	00:13:18	18	1.2			
10	N	18:12:38	18:25:29	00:12:51	18	1.2			
11	S	18:28:43	18:42:23	00:13:40	18	1.4			
							Block 14 - patches		
34	N	19:06:31	19:09:01	00:02:30	22	1.1	30-36 - UL001		
35	S	19:14:12	19:16:40	00:02:28	20	1.1	45-46 - UL002		
36	N	19:19:35	19:21:44	00:02:09	20	1.1	41-44 - UL003		
5	N	19:30:35	19:33:17	00:02:42	21	1.3	4-7 - UL004		
4	S	19:35:29	19:39:00	00:03:31	20	1.3	1-12 - UL005		
6	S	19:49:33	19:52:04	00:02:31	21	1.2	68-70 - UL006		
32	N	20:01:52	20:03:31	00:01:39	19	1.3	36-37 - UL007		

Additional Comments

Woolpert Lidar Acquisition Log

Project Info						Date		
Project #	Project Name		Unique ID			Flight Date (UTC)	Day of Year	Flight #
79935	FEMA Wyoming Lidar		Day232_90513_A			08/20/2019	232	A
Crew		Equipment			Time			Airports
Pilot		Aircraft Make / Model / Tail #			Hobbs Start	Local Start	UTC Start	Departing
Gebhart		Cessna 404 Titan - N404CP			2338.5	09:15:00	15:15:00	KCPR
Operator		Sensor Make / Model / Serial #			Hobbs End	Local End	UTC End	Arriving
Galambos		Leica Terrain Mapper - 90513			2344.6	14:23:00	20:23:00	KRIW
Conditions								
Wind Dir (°)	Wind Speed (kts)	Visibility (mi)	Ceiling (ft)	Cloud Cover	Temp. (°C)	Dew Point (°C)	Pressure ("Hg)	
300	7	10		Clear	19	5	30.19	
Air Speed (kts)		Altitude AGL (ft)	Altitude MSL (ft)	Airfield Elevation (ft)				
150		11,483	17,000	6,017				
Settings								
Point Spacing (m)	Point Density (ppsm)	Scan Angle/FOV (°)		Scan Frequency (Hz)	Pulse Rate (kHz)	Laser Power (%)		
0.7	2	40		80	670	100		
						Verify S-Turns Before Mission	Yes	
Line #	Direction	Start Time (UTC)	End Time (UTC)	Time On-Line	Satellite	PDOP	Line Notes/Comments	
26	S	15:15:54	15:28:15	00:12:21	21	1.2	Block 21/Takeoff: 14:40z/gps 14:30:44	
27	N	15:30:35	15:42:38	00:12:03	23	1.1		
28	S	15:45:28	15:58:14	00:12:46	21	1.4		
29	N	16:00:44	16:12:38	00:11:54	23	1.2		
30	S	16:15:46	16:28:07	00:12:21	22	1.1		
31	N	16:30:18	16:42:17	00:11:59	21	1.2		
							Block 9	
63	N	17:21:44	17:34:05	00:12:21	22	1.2		
62	S	17:36:52	17:48:37	00:11:45	24	1.2		
61	N	17:51:09	18:03:49	00:12:40	21	1.2		
60	S	18:06:38	18:18:35	00:11:57	20	1.1		
59	N	18:21:21	18:34:39	00:13:18	20	1.4		
58	S	18:37:18	18:49:35	00:12:17	21	1.2		
57	N	18:51:54	19:04:56	00:13:02	22	1.2		
56	S	19:07:34	19:20:15	00:12:41	24	1.1		
55	N	19:22:48	19:35:50	00:13:02	22	1.2		
54	S	19:39:28	19:52:18	00:12:50	22	1.2		
53	N	19:54:40	20:08:02	00:13:22	22	1.1		
52	S	20:10:37	20:23:48	00:13:11	22	1.2		
						Page 1	Verify S-Turns After Mission	Yes
Additional Comments								

Woolpert Lidar Acquisition Log

Project Info						Date			
Project #	Project Name		Unique ID			Flight Date (UTC)	Day of Year	Flight #	
79935	FEMA Wyoming Liadar		Day238_90513_A			08/26/2019	238	A	
Crew		Equipment			Time			Airports	
Pilot		Aircraft Make / Model / Tail #			Hobbs Start	Local Start	UTC Start	Departing	
Gebhart		Cessna 404 Titan - N404CP			2360.2	11:07:00	17:07:00	KCPR	
Operator		Sensor Make / Model / Serial #			Hobbs End	Local End	UTC End	Arriving	
Galambos		Leica Terrain Mapper - 90513			2365.7	15:29:00	21:29:00	KRIW	
Wind Dir (°)	Wind Speed (kts)	Visibility (mi)	Ceiling (ft)	Cloud Cover	Temp. (°C)	Dew Point (°C)	Pressure ("Hg)		
310	6	10		Clear	28	2	29.98		
Air Speed (kts)		Altitude AGL (ft)	Altitude MSL (ft)	Airfield Elevation (ft)					
150		11,483	17,159	5,302					
Settings									
Point Spacing (m)	Point Density (ppsm)	Scan Angle/FOV (°)		Scan Frequency (Hz)	Pulse Rate (kHz)	Laser Power (%)			
0.7	2	40		80	670	100			
							Verify S-Turns Before Mission	Yes	
Line #	Direction	Start Time (UTC)	End Time (UTC)	Time On-Line	Satellite	PDOP	Line Notes/Comments		
13	S	17:07:05	17:15:08	00:08:03	21	1.1	Block 21 - Patch wpts 19-57/UL001 GPS:16:11:00 - Talkeoff: 1620z		
40	S	17:56:25	17:59:00	00:02:35	18	1.3	Block 14 - Patch Circles /wpts 42-50/UL002		
25	N	18:03:56	18:06:20	00:02:24	21	1.1	WPTS 45-51/ UL003		
9	S	18:16:03	18:18:11	00:02:08	24	1.1	26-33 / circles		
12	S	18:33:34	18:35:33	00:01:59	24	1.1	Block 10 COULD BE A CLOUD WPT 25		
3	S	19:01:35	19:05:38	00:04:03	25	1	Block 16 - CIRCLES 32-46 - UL001		
33	N	19:16:38	19:19:00	00:02:22	23	1.2	26-33 - UL002		
40	S	19:26:52	19:29:12	00:02:20	22	1.2	9-15 - UL003		
25	S	20:04:10	20:06:35	00:02:25	21	1	Circles block 15 1-9 - UL001		
24	N	20:09:51	20:14:08	00:04:17	18	1.3	1-13 - UL002		
23	S	20:16:03	20:32:40	00:16:37	18	1.2	FULL line UL003		
22	N	20:35:43	20:51:37	00:15:54	16	1.4			
21	S	20:54:05	21:10:24	00:16:19	18	1.2			
20	N	21:13:02	21:29:33	00:16:31	18	1.2			
						Page 1	Verify S-Turns After Mission	Yes	
Additional Comments									

Woolpert Lidar Acquisition Log

Project Info				Date			
Project #	Project Name	Unique ID	Flight Date (UTC)	Day of Year	Flight #		
79935	FEMA Wyoming Liadar	Day239_90513_A	08/27/2019	239	A		
Crew		Equipment		Time			Airports
Pilot	Aircraft Make / Model / Tail #		Hobbs Start	Local Start	UTC Start	Departing	
Gebhart	Cessna 404 Titan - N404CP		2366.3	10:02:00	16:02:00	KCPR	
Operator	Sensor Make / Model / Serial #		Hobbs End	Local End	UTC End	Arriving	
Galambos	Leica Terrain Mapper - 90513		2371.6	13:58:00	19:58:00	KRIW	

Wind Dir (°)	Wind Speed (kts)	Visibility (mi)	Ceiling (ft)	Cloud Cover	Temp. (°C)	Dew Point (°C)	Pressure ("Hg)
70	8	10		Clear	10	4	30.32
Air Speed (kts)		Altitude AGL (ft)		Altitude MSL (ft)		Airfield Elevation (ft)	
150		11,483		16,453		4,970	

Settings					
Point Spacing (m)	Point Density (ppsm)	Scan Angle/FOV (°)	Scan Frequency (Hz)	Pulse Rate (kHz)	Laser Power (%)
0.7	2	40	80	670	100

					Verify S-Turns Before Mission	Yes
--	--	--	--	--	-------------------------------	-----

Line #	Direction	Start Time (UTC)	End Time (UTC)	Time On-Line	Satellite	PDOP	Line Notes/Comments
Block 15							
19	N	16:02:27	16:18:55	00:16:28	23	1.2	GPS: 15:01:00
18	S	16:21:25	16:37:05	00:15:40	24	1.1	Parachute beginning of line
17	N	16:39:43	16:56:03	00:16:20	25	1	
16	S	16:58:38	17:14:58	00:16:20	22	1.2	
15	N	17:17:34	17:33:48	00:16:14	22	1.2	
14	S	17:36:24	17:52:35	00:16:11	21	1.1	
13	N	17:55:24	18:11:32	00:16:08	20	1.4	
12	S	18:14:14	18:30:11	00:15:57	22	1.2	
11	N	18:32:51	18:49:03	00:16:12	24	1.1	Circles
Block 10 - Patches							
46	N	19:05:34	19:09:26	00:03:52	20	1.3	UL001 - WPTS 1-10
33	S	19:14:10	19:18:16	00:04:06	20	1.3	UL002 - 1-16 / circles -
Over CORS 19:33:37 Circles							
Block 9 - Patches							
42	N	19:47:51	19:09:26	23:21:35	20	1.2	UL001 - WPTS 1-3
49	S	19:54:44	19:58:22	00:03:38	20	1.2	UL002 - WPTS 18-26
Circles							

Page 1					Verify S-Turns After Mission	Yes
--------	--	--	--	--	------------------------------	-----

Additional Comments

Woolpert Lidar Acquisition Log

Project Info						Date			
Project #	Project Name			Unique ID		Flight Date (UTC)	Day of Year	Flight #	
79935	FEMA Wyoming Block 12 & 15			Day239_90515_A		08/27/2019	239	A	
Crew		Equipment			Time			Airports	
Pilot	Aircraft Make / Model / Tail #			Hobbs Start	Local Start	UTC Start	Departing		
Gibilaro	Cessna 404 Titan - N475RC			1914.5	08:50:00	14:50:00	RIW		
Operator	Sensor Make / Model / Serial #			Hobbs End	Local End	UTC End	Arriving		
Kennedy	Leica Terrain Mapper - 90515			1920.1	14:25:00	20:25:00	CPR		
Conditions									
Wind Dir (°)	Wind Speed (kts)	Visibility (mi)	Ceiling (ft)	Cloud Cover	Temp. (°C)	Dew Point (°C)	Pressure ("Hg)		
40	3	10		Clear	11	4	30.29		
Air Speed (kts)		Altitude AGL (ft)	Altitude MSL (ft)	Airfield Elevation (ft)					
150		11,483	16,453	5,516					
Settings									
Point Spacing (m)	Point Density (ppsm)	Scan Angle/FOV (°)		Scan Frequency (Hz)	Pulse Rate (kHz)	Laser Power (%)			
7	2	40		80	670	100			
						Verify S-Turns Before Mission	Yes		
Line #	Direction	Start Time (UTC)	End Time (UTC)	Time On-Line	Satellite	PDOP	Line Notes/Comments		
19	S	15:15:00	15:31:00	00:16:00	14	1.4			
9	N	15:35:00	15:51:00	00:16:00	15	1.7			
8	S	15:55:00	16:11:00	00:16:00	16	1.5			
7	N	16:14:00	16:30:00	00:16:00	16	1.5	Roll warning waypoint 28		
6	S	16:34:00	16:50:00	00:16:00	16	1.4			
5	N	16:53:00	17:09:00	00:16:00	16	1.8			
4	S	17:13:00	17:29:00	00:16:00	16	1.7			
3	N	17:34:00	17:50:00	00:16:00	13	1.9	Roll warning waypoint 1		
2	S	17:53:00	18:09:00	00:16:00	14	2.1			
1	N	18:13:00	18:29:00	00:16:00	15	1.6			
							CORS overflight @ 18:44		
66	S	18:55:00	19:11:00	00:16:00	16	1.7	Start Block 12		
65	N	19:14:00	19:30:00	00:16:00	15	1.5	CORS overflight @ 19:35		

Additional Comments

Woolpert Lidar Acquisition Log

Project Info					Date		
Project #	Project Name		Unique ID		Flight Date (UTC)	Day of Year	Flight #
79935	Wyoming FEMA Block 14 and 20		Day258_90515_A		09/15/2019	258	A
Crew		Equipment		Time			Airports
Pilot	Aircraft Make / Model / Tail #		Hobbs Start	Local Start	UTC Start	Departing	
LaRocque	Cessna 404 Titan - N475RC		1969.7	09:20:00	15:20:00	CPR	
Operator	Sensor Make / Model / Serial #		Hobbs End	Local End	UTC End	Arriving	
Ryan	Leica Terrain Mapper - 90515		1976.7	13:41:00	19:41:00	CPR	
Conditions							
Wind Dir (°)	Wind Speed (kts)	Visibility (mi)	Ceiling (ft)	Cloud Cover	Temp. (°C)	Dew Point (°C)	Pressure ("Hg)
240	10	10	200	Few	12	-1	3012
Air Speed (kts)		Altitude AGL (ft)	Altitude MSL (ft)	Airfield Elevation (ft)			
150		11,483	17,159	5,344			
Settings							
Point Spacing (m)	Point Density (ppsm)	Scan Angle/FOV (°)	Scan Frequency (Hz)	Pulse Rate (kHz)	Laser Power (%)		
0.7		40	80	670	100		
						Verify S-Turns Before Mission	Yes
Line #	Direction	Start Time (UTC)	End Time (UTC)	Time On-Line	Satellite	PDOP	Line Notes/Comments
4	S	15:20:00	15:37:00	00:17:00	11	1.4	
5	N	15:40:00	15:56:00	00:16:00	10	1.8	
6	S	15:59:00	16:15:00	00:16:00	10	2.2	
26	N	16:20:00	16:35:00	00:15:00	10	1.5	
27	S	16:38:00	16:55:00	00:17:00	10	2.1	
30	N	16:57:00	17:13:00	00:16:00	13	1.5	
31	S	17:16:00	17:33:00	00:17:00	15	1.5	
34	N	17:35:00	17:51:00	00:16:00	16	1.7	
37	S	17:54:00	18:10:00	00:16:00	17	1.5	
38	N	18:13:00	18:28:00	00:15:00	17	1.6	
39	S	18:32:00	18:48:00	00:16:00	15	1.5	
							BLOCK 20
12	S	18:57:00	19:10:00	00:13:00	13	1.8	
13	N	19:13:00	19:26:00	00:13:00	13	1.7	
14	S	19:28:00	19:41:00	00:13:00	14	1.7	
						Verify S-Turns After Mission	Yes
Additional Comments							
KDUB CORS USED/KDUB WX: 290 05 10+ SKC 12/M1 3023							

Woolpert Lidar Acquisition Log

Project Info				Date		
Project #	Project Name	Unique ID	Flight Date (UTC)	Day of Year	Flight #	
79935	WY FEMA Blk 14 RF	Day265_90511_A	09/22/2019	265	A	

Crew	Equipment	Time			Airports
Pilot	Aircraft Make / Model / Tail #	Hobbs Start	Local Start	UTC Start	Departing
Costanzo	Cessna 404 Titan - N404CP	7394.2	11:12:00	17:12:00	JAC
Operator	Sensor Make / Model / Serial #	Hobbs End	Local End	UTC End	Arriving
Denham	Leica Terrain Mapper - 90511	7395.9	13:17:00	19:17:00	JAC

Conditions							
Wind Dir (°)	Wind Speed (kts)	Visibility (mi)	Ceiling (ft)	Cloud Cover	Temp. (°C)	Dew Point (°C)	Pressure ("Hg)
220	11	10	4,100	Scattered	9	3	30.19
Air Speed (kts)	Altitude AGL (ft)	Altitude MSL (ft)	Airfield Elevation (ft)				
150		17,159	6,450				

Settings					
Point Spacing (m)	Point Density (ppsm)	Scan Angle/FOV (°)	Scan Frequency (Hz)	Pulse Rate (kHz)	Laser Power (%)
		40	80	670	100

					Verify S-Turns Before Mission	Yes
--	--	--	--	--	-------------------------------	-----

Line #	Direction	Start Time (UTC)	End Time (UTC)	Time On-Line	Satellite	PDOP	Line Notes/Comments
32/1	S	18:07:00	18:09:00	00:02:00	21	1.1	WISPY Cloud 18:08
32/1	N	18:13:00	18:16:00	00:03:00	21	1.2	

Page 1					Verify S-Turns After Mission	Yes
--------	--	--	--	--	------------------------------	-----

Additional Comments
***17:52 Flying over CORS P715. (Entering Mission Area) *** 18:33 Flying over CORS P715. (Entering Mission Area)